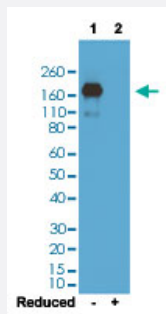


RecomAb™

Mouse IgA monoclonal antibody, clone RM220

Catalog # MAB12771 Size 100 ug

Applications

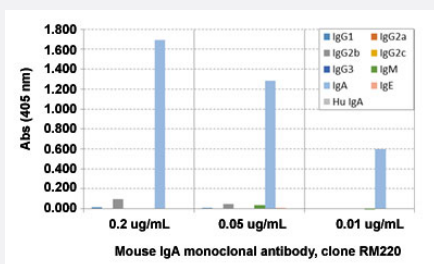


Western Blot

Western blot analysis of Lane 1: nonreduced (-) and Lane 2: reduced (+) mouse IgA with Mouse IgA monoclonal antibody, clone RM220 (Cat # MAB12771) under 0.5 ug/mL working concentration. This antibody reacts to nonreduced IgA.

Enzyme-linked Immunoabsorbent Assay

A titer ELISA of mouse IgA. The plate was coated with different amount of mouse IgA. A serial dilution of Mouse IgA monoclonal antibody, clone RM220 (Cat# MAB12771) was used as the primary antibody. An alkaline phosphatase conjugated anti-rabbit IgG as the secondary antibody.



Enzyme-linked Immunoabsorbent Assay

ELISA analysis of Mouse IgA monoclonal antibody, clone RM220 (Cat # MAB12771) at the following concentrations: 0.2 ug/mL, 0.05 ug/mL, and 0.01 ug/mL. The plate was coated with 50 ng/well of different immunoglobulins and the result shows this antibody reacts to mouse IgA. No cross reactivity with mouse IgG1, IgG2a, IgG2b, IgG2c, IgG3, IgM, IgE, or human IgA. An alkaline phosphatase conjugated anti-rabbit IgG as the secondary antibody.

Specification

Product Description

Rabbit recombinant monoclonal antibody raised against mouse IgA.

Antibody Species	Rabbit
Immunogen	Original antibody is raised against mouse IgA.
Sequence	N/A
Reactivity	Mouse
Specificity	This antibody specifically reacts to mouse IgA. No cross reactivity with mouse IgG1, IgG2a, IgG2b, IgG2c, IgG3, IgM, IgE, or human IgA.
Form	Liquid
Purification	Protein A affinity purification
Isotype	IgG
Recommend Usage	ELISA (0.005 - 0.2 ug/mL) Flow Cytometry Immunocytochemistry (0.5 - 2 ug/mL) Immunohistochemistry (0.5 - 2 ug/mL) Immunoprecipitation Western Blot (0.5 - 2 ug/mL) The optimal working dilution should be determined by the end user.
Storage Buffer	In PBS (50% glycerol, 1% BSA, 0.09% sodium azide)
Storage Instruction	Store at -20°C. Aliquot to avoid repeated freezing and thawing.
Note	This product contains sodium azide: a POISONOUS AND HAZARDOUS SUBSTANCE which should be handled by trained staff only.

Applications

- Western Blot

Western blot analysis of Lane 1: nonreduced (-) and Lane 2: reduced (+) mouse IgA with Mouse IgA monoclonal antibody, clone RM220 (Cat # MAB12771) under 0.5 ug/mL working concentration. This antibody reacts to nonreduced IgA.

- Immunohistochemistry

- Immunocytochemistry

- Immunoprecipitation

- Enzyme-linked Immunoabsorbent Assay

A titer ELISA of mouse IgA. The plate was coated with different amount of mouse IgA. A serial dilution of Mouse IgA monoclonal antibody, clone RM220 (Cat# MAB12771) was used as the primary antibody. An alkaline phosphatase conjugated anti-rabbit IgG as the secondary antibody.

- Enzyme-linked Immunoabsorbent Assay

ELISA analysis of Mouse IgA monoclonal antibody, clone RM220 (Cat # MAB12771) at the following concentrations: 0.2 ug/mL, 0.05 ug/mL, and 0.01 ug/mL. The plate was coated with 50 ng/well of different immunoglobulins and the result shows this antibody reacts to mouse IgA. No cross reactivity with mouse IgG1, IgG2a, IgG2b, IgG2c, IgG3, IgM, IgE, or human IgA. An alkaline phosphatase conjugated anti-rabbit IgG as the secondary antibody.

- Flow Cytometry

Gene Info — Igh-2

Entrez GeneID	238447
---------------	------------------------

Protein Accession#	P01878
--------------------	------------------------

Gene Name	Igh-2
-----------	-------

Gene Alias	IgA, IgHa
------------	-----------

Gene Description	immunoglobulin heavy chain 2 (serum IgA)
------------------	------------------------------------------

Gene Ontology	Hyperlink
---------------	---------------------------

Other Designations	-
--------------------	---