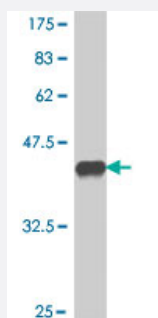


ABR polyclonal antibody (A01)

Catalog # H00000029-A01

Size 50 uL

Applications



Western Blot detection against Immunogen (38.21 KDa) .

Specification

Product Description	Mouse polyclonal antibody raised against a partial recombinant ABR.
Immunogen	ABR (NP_068781, 750 a.a. ~ 859 a.a) partial recombinant protein with GST tag.
Sequence	PAAKENCMMHLLRSLPDPNLITFLFLEHLKRVAEKEPINKMSLHNLATVFGPTLLRPSEVESKAH LTSAADIWSDVMAQVQVLLYYLQHPPISFAELKRNTLYFSTDV
Host	Mouse
Reactivity	Human
Interspecies Antigen Sequence	Mouse (100); Rat (100)
Quality Control Testing	Antibody Reactive Against Recombinant Protein. Western Blot detection against Immunogen (38.21 KDa) .
Storage Buffer	50 % glycerol
Storage Instruction	Store at -20°C or lower. Aliquot to avoid repeated freezing and thawing.

Applications

- Western Blot (Recombinant protein)

[Protocol Download](#)

- ELISA

Gene Info — ABR

Entrez GeneID [29](#)

GeneBank Accession# [NM_021962](#)

Protein Accession# [NP_068781](#)

Gene Name ABR

Gene Alias FLJ45954, MDB

Gene Description active BCR-related gene

Omim ID [155255 600365](#)

Gene Ontology [Hyperlink](#)

Gene Summary This gene encodes a protein that is similar to the protein encoded by the breakpoint cluster region gene located on chromosome 22. The protein encoded by this gene contains a GTPase-activating protein domain, a domain found in members of the Rho family of GTP-binding proteins. Functional studies in mice determined that this protein plays a role in vestibular morphogenesis, suggesting that Rho-related GTPases help coordinate motor skills and balance. Alternatively spliced transcript variants that encode different isoforms have been reported for this gene. [provided by RefSeq]

Other Designations active breakpoint cluster region-related protein

Disease

- [Tobacco Use Disorder](#)