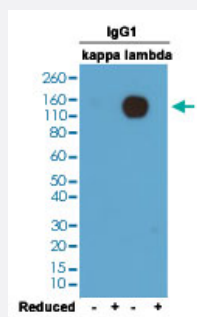


RecomAb™

Mouse immunoglobulin lambda light chain monoclonal antibody, clone RM110

Catalog # MAB12763 Size 100 ug

Applications



Western Blot

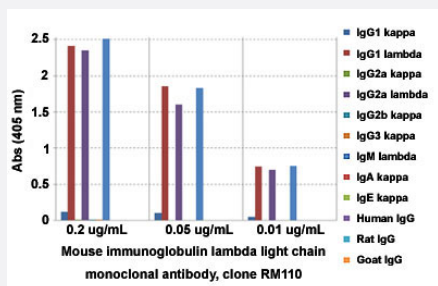
Western blot analysis of nonreduced (-) and reduced (+) mouse IgG1 (kappa) and IgG1 (lambda) (20 ng/lane) with Mouse immunoglobulin lambda light chain monoclonal antibody, clone RM110 (Cat # MAB12763) under 0.2 ug/mL working concentration. This antibody reacts to nonreduced IgG1 (lambda).

Enzyme-linked Immunoabsorbent Assay

ELISA analysis of Mouse immunoglobulin lambda light chain monoclonal antibody, clone RM110 (Cat # MAB12763) at the following concentrations: 0.2 ug/mL, 0.05 ug/mL, and 0.01 ug/mL. The plate was coated with 50 ng/well of different immunoglobulins and the result shows this antibody reacts to the lambda light chain of mouse immunoglobulins. No cross reactivity with the kappa light chain, human IgG, rat IgG, or goat IgG. An alkaline phosphatase conjugated anti-rabbit IgG as the secondary antibody.

Enzyme-linked Immunoabsorbent Assay

A titer ELISA of mouse IgG1λ. The plate was coated with different amounts of mouse IgG1λ. A serial dilution of Mouse immunoglobulin lambda light chain monoclonal antibody, clone RM110 (Cat# MAB12763) was used as the primary antibody. An alkaline phosphatase conjugated anti-rabbit IgG as the secondary antibody.



Specification

Product Description	Rabbit recombinant monoclonal antibody raised against mouse immunoglobulin lambda light chain.
Antibody Species	Rabbit
Immunogen	Original antibody is raised against mouse IgM lambda.
Sequence	N/A
Reactivity	Mouse
Specificity	This antibody reacts to the lambda light chain of mouse immunoglobulins. No cross reactivity with the kappa light chain, human IgG, rat IgG, or goat IgG.
Form	Liquid
Purification	Protein A affinity purification
Isotype	IgG
Recommend Usage	ELISA (0.005 - 0.2 ug/mL) Flow Cytometry Immunocytochemistry (0.5 - 2 ug/mL) Immunohistochemistry (0.5 - 2 ug/mL) Immunoprecipitation Western Blot (0.1 - 0.5 ug/mL) The optimal working dilution should be determined by the end user.
Storage Buffer	In PBS (50% glycerol, 1% BSA, 0.09% sodium azide)
Storage Instruction	Store at -20°C. Aliquot to avoid repeated freezing and thawing.
Note	This product contains sodium azide: a POISONOUS AND HAZARDOUS SUBSTANCE which should be handled by trained staff only.

Applications

- Western Blot

Western blot analysis of nonreduced (-) and reduced (+) mouse IgG1 (kappa) and IgG1 (lambda) (20 ng/lane) with Mouse immunoglobulin lambda light chain monoclonal antibody, clone RM110 (Cat # MAB12763) under 0.2 ug/mL working concentration. This antibody reacts to nonreduced IgG1 (lambda).

- Immunohistochemistry

- Immunocytochemistry

- Immunoprecipitation

- Enzyme-linked Immunoabsorbent Assay

ELISA analysis of Mouse immunoglobulin lambda light chain monoclonal antibody, clone RM110 (Cat # MAB12763) at the following concentrations: 0.2 ug/mL, 0.05 ug/mL, and 0.01 ug/mL. The plate was coated with 50 ng/well of different immunoglobulins and the result shows this antibody reacts to the lambda light chain of mouse immunoglobulins. No cross reactivity with the kappa light chain, human IgG, rat IgG, or goat IgG. An alkaline phosphatase conjugated anti-rabbit IgG as the secondary antibody.

- Enzyme-linked Immunoabsorbent Assay

A titer ELISA of mouse IgG1 λ . The plate was coated with different amounts of mouse IgG1 λ . A serial dilution of Mouse immunoglobulin lambda light chain monoclonal antibody, clone RM110 (Cat# MAB12763) was used as the primary antibody. An alkaline phosphatase conjugated anti-rabbit IgG as the secondary antibody.

- Flow Cytometry

Gene Info — Igl-C1

Entrez GeneID	110785
---------------	------------------------

Protein Accession#	P01843
--------------------	------------------------

Gene Name	Igl-C1
-----------	--------

Gene Alias	Clambda1
------------	----------

Gene Description	immunoglobulin lambda chain, constant region 1
------------------	------------------------------------------------

Gene Ontology	Hyperlink
---------------	---------------------------

Gene Summary	O
--------------	---

Other Designations	-
--------------------	---