

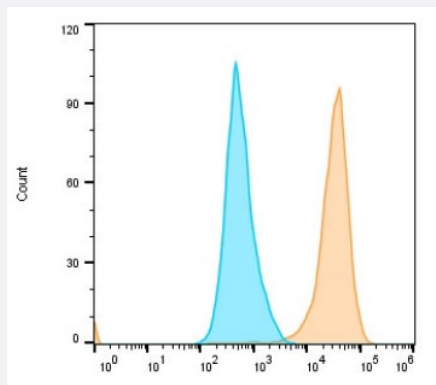
NanoAb™

RecomAb™

Claudin-18.2 VHH recombinant monoclonal antibody

Catalog # RAB06815 Size 100 ug

Applications



Flow Cytometry

Flow cytometric analysis of Claudin-18.2-overexpressed HEK-293T (human epithelial cell line from embryonic kidney transformed with large T antigen) labeling Claudin-18.2 with Claudin-18.2 VHH recombinant monoclonal antibody (Cat # RAB06815) at 1:10000 dilution (yellow) compared with Human IgG1-Isotype control (green).

Specification

Product Description	Alpaca VHH recombinant monoclonal antibody raised against human Claudin-18.2.
Antibody Species	Alpaca
Immunogen	Human Claudin-18.2 recombinant protein
Reactivity	Crab-eating macaque, Human
Form	Liquid
Conjugation	Unconjugated
Purification	Protein A
Isotype	Human IgG1 Fc (mutation)
Recommend Usage	ELISA (1:4000-1:10000) Flow Cytometry (1:200-1:1000) The optimal working dilution should be determined by the end user.

Storage Buffer	In 10 mM PBS, pH 7.5 (0.05% sucrose, 0.1% trehalose, 0.01% proclin 300, 50% glycerol)
Storage Instruction	Store at -20°C. Aliquot to avoid repeated freezing and thawing.

Applications

- Enzyme-linked Immunoabsorbent Assay
- Flow Cytometry

Flow cytometric analysis of Claudin-18.2-overexpressed HEK-293T (human epithelial cell line from embryonic kidney transformed with large T antigen) labeling Claudin-18.2 with Claudin-18.2 VHH recombinant monoclonal antibody (Cat # RAB06815) at 1:10000 dilution (yellow) compared with Human IgG1-Isotype control (green).