

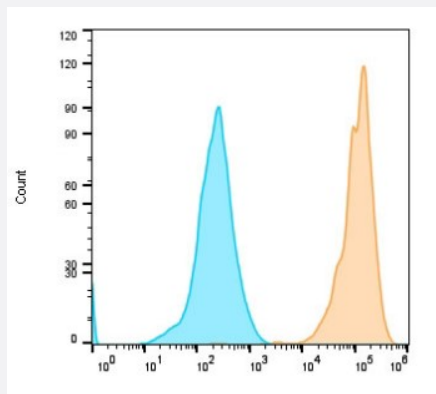
NanoAb™

RecomAb™

# MSLN VHH recombinant monoclonal antibody

Catalog # RAB06811      Size 100 ug

## Applications



### Flow Cytometry

Flow cytometric analysis of MSLN-overexpressed ASPC-1 cells labeling MSLN with MSLN VHH recombinant monoclonal antibody (Cat # RAB06811) at 1:10000 (yellow) compared with Human IgG1-Isotype control (green).

## Specification

Product Description	Alpaca VHH recombinant monoclonal antibody raised against human MSLN.
Antibody Species	Alpaca
Immunogen	Human MSLN recombinant protein
Reactivity	Crab-eating macaque, Human
Form	Liquid
Conjugation	Unconjugated
Purification	Protein A
Isotype	Human IgG1 Fc (mutation)
Recommend Usage	ELISA (1:4000-1:10000) Flow Cytometry (1:200-1:1000) The optimal working dilution should be determined by the end user.

<b>Storage Buffer</b>	In 10 mM PBS, pH 7.5 (0.05% sucrose, 0.1% trehalose, 0.01% proclin 300, 50% glycerol)
<b>Storage Instruction</b>	Store at -20°C. Aliquot to avoid repeated freezing and thawing.

## Applications

- Enzyme-linked Immunoabsorbent Assay
- Flow Cytometry

Flow cytometric analysis of MSLN-overexpressed ASPC-1 cells labeling MSLN with MSLN VHH recombinant monoclonal antibody (Cat # RAB06811) at 1:10000 (yellow) compared with Human IgG1-Isotype control (green).