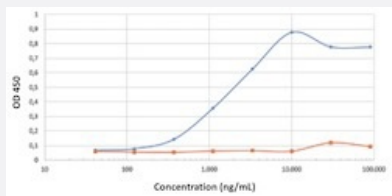


RecomAb™

ALB recombinant monoclonal antibody, clone D1

Catalog # RAB03106 Size 200 ug

Applications



Enzyme-linked Immunoabsorbent Assay

ELISA analysis of ALB recombinant monoclonal antibody, clone D1 (Cat # RAB03106).

Binding curves of the r chimeric version of RAB03106 (blue line) and isotype control (3.0- anti-fluorescein; orange line) to an ELISA plate coated with ALB at a concentration of 5 ug/ml. A 3-fold serial dilution from 90 ug/ml was tested in the experiment. For signal detection- a 1:4000 dilution of an HRP-conjugated anti-r antibody was used.

Specification

Product Description	Rabbit recombinant monoclonal antibody raised against bovine ALB.
Antibody Species	Rabbit
Immunogen	Original antibody is raised against recombinant protein corresponding to bovine ALB.
Reactivity	Bovine
Form	Liquid
Isotype	IgG kappa
Recommend Usage	ELISA Immunoprecipitation The optimal working dilution should be determined by the end user.
Storage Buffer	In PBS with 0.02% Proclin 300
Storage Instruction	Store at 4°C for up to 3 months. For longer storage, aliquot and store at -20°C. Aliquot to avoid repeated freezing and thawing.

Applications

- Immunoprecipitation
- Enzyme-linked Immunoabsorbent Assay

ELISA analysis of ALB recombinant monoclonal antibody, clone D1 (Cat # RAB03106).

Binding curves of the r chimeric version of RAB03106 (blue line) and isotype control (3.0- anti-fluorescein; orange line) to an ELISA plate coated with ALB at a concentration of 5 ug/ml. A 3-fold serial dilution from 90 ug/ml was tested in the experiment. For signal detection- a 1:4000 dilution of an HRP-conjugated anti-r antibody was used.

Gene Info — ALB

Entrez GeneID	280717
---------------	------------------------

Gene Name	ALB
-----------	-----

Gene Alias	MGC179277
------------	-----------

Gene Description	albumin
------------------	---------

Gene Ontology	Hyperlink
---------------	---------------------------

Other Designations	-
--------------------	---