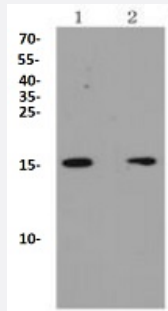


RecomAb™

## p16 ARC recombinant monoclonal antibody

Catalog # RAB02395      Size 100 uL

### Applications



#### Western Blot (Cell lysate)

Western blot analysis of Lane1:MCF7 whole cell lysate, Lane2:SK-BR-3 whole cell lysate with p16 ARC recombinant monoclonal antibody (Cat # RAB02395).

### Specification

Product Description	Rabbit recombinant monoclonal antibody raised against recombinant p16 ARC.
Antibody Species	Rabbit
Theoretical MW (kDa)	16
Reactivity	Human, Mouse, Rat
Specificity	This antibody detects endogenous levels of p16 ARC and does not cross-react with related proteins.
Form	Liquid
Purification	Protein A purification
Isotype	IgG
Recommend Usage	Western Blot (1:500-1:2000)
Storage Buffer	In PBS, pH 7.2 (0.02% sodium azide and 50% glycerol)

**Storage Instruction**

Store at 4°C short term.  
Aliquot and store at -20°C long term.  
Avoid freeze-thaw cycles.

**Note**

This product contains sodium azide: a POISONOUS AND HAZARDOUS SUBSTANCE which should be handled by trained staff only.

## Applications

- Western Blot (Cell lysate)

Western blot analysis of Lane1:MCF7 whole cell lysate, Lane2:SK-BR-3 whole cell lysate with p16 ARC recombinant monoclonal antibody (Cat # RAB02395).

- Immunohistochemistry (Formalin/PFA-fixed paraffin-embedded sections)

- Immunocytochemistry

- Immunofluorescence

- Flow Cytometry

## Gene Info — ARPC5

**Entrez GeneID**[10092](#)**Protein Accession#**[Q15511](#)**Gene Name**

ARPC5

**Gene Alias**

ARC16, MGC88523, dJ127C7.3, p16-Arc

**Gene Description**

actin related protein 2/3 complex, subunit 5, 16kDa

**Omim ID**[604227](#)**Gene Ontology**[Hyperlink](#)**Gene Summary**

This gene encodes one of seven subunits of the human Arp2/3 protein complex. The Arp2/3 protein complex has been implicated in the control of actin polymerization in cells and has been conserved through evolution. The exact role of the protein encoded by this gene, the p16 subunit, has yet to be determined. [provided by RefSeq]

**Other Designations**

Arp2/3 protein complex subunit p16|OTTHUMP00000033266|actin related protein 2/3 complex subunit 5|actin related protein 2/3 complex, subunit 5 (16 kD)

## Pathway

- [Fc gamma R-mediated phagocytosis](#)
- [Pathogenic Escherichia coli infection - EHEC](#)
- [Regulation of actin cytoskeleton](#)