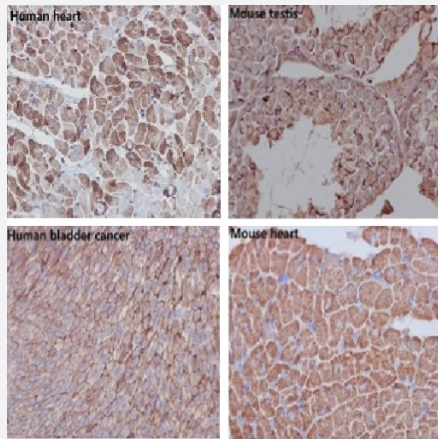


RecomAb™

ACTB recombinant monoclonal antibody, clone R09-4C9

Catalog # RAB01561 Size 100 uL

Applications



Immunohistochemistry (Formalin/PFA-fixed paraffin-embedded sections)

Immunohistochemistry (Formalin-fixed paraffin-embedded sections) of (1) Human heart; (2) mouse testis; (3) Human bladder cancer; (4) mouse heart with beta Actin recombinant monoclonal antibody, clone R09-4C9 (Cat # RAB01561).

Specification

Product Description	Rabbit recombinant monoclonal antibody raised against synthetic peptide of human beta Actin.
Antibody Species	Rabbit
Immunogen	Original antibody is raised against a synthetic peptide corresponding to human beta Actin
Theoretical MW (kDa)	Calculated MW: 42 kD
Reactivity	Human
Form	Liquid
Purification	Affinity purification
Isotype	IgG

Recommend Usage	Immunofluorescence (1:50-1:200) Immunohistochemistry (1:50-1/100) Western Blot (1:500-1:1000) The optimal working dilution should be determined by the end user.
Storage Buffer	In 50 mM Tris-Glycine, pH 7.4 (0.15 M NaCl, 40% Glycerol, 0.01% Sodium azide and 0.05% BSA)
Storage Instruction	Store at 4°C for short term. For long term storage store at -20°C. Aliquot to avoid repeated freezing and thawing.
Note	This product contains sodium azide: a POISONOUS AND HAZARDOUS SUBSTANCE which should be handled by trained staff only.

Applications

- Western Blot
- Immunohistochemistry (Formalin/PFA-fixed paraffin-embedded sections)
Immunohistochemistry (Formalin-fixed paraffin-embedded sections) of (1) Human heart; (2) mouse testis; (3) Human bladder cancer; (4) mouse heart with beta Actin recombinant monoclonal antibody, clone R09-4C9 (Cat # RAB01561).
- Immunohistochemistry (Frozen sections)
- Immunocytochemistry

Gene Info — ACTB

Entrez GeneID	60
Protein Accession#	P60709
Gene Name	ACTB
Gene Alias	PS1TP5BP1
Gene Description	actin, beta
Omim ID	102630
Gene Ontology	Hyperlink
Gene Summary	This gene encodes one of six different actin proteins. Actins are highly conserved proteins that are involved in cell motility, structure, and integrity. This actin is a major constituent of the contractile apparatus and one of the two nonmuscle cytoskeletal actins. [provided by RefSeq]

Other Designations

PS1TP5-binding protein 1|actin, cytoplasmic 1|beta actin|beta cytoskeletal actin

Pathway

- [Adherens junction](#)
- [Arrhythmogenic right ventricular cardiomyopathy \(ARVC\)](#)
- [Focal adhesion](#)
- [Hypertrophic cardiomyopathy \(HCM\)](#)
- [Leukocyte transendothelial migration](#)
- [Pathogenic Escherichia coli infection - EHEC](#)
- [Regulation of actin cytoskeleton](#)
- [Tight junction](#)
- [Vibrio cholerae infection](#)

Disease

- [Breast cancer](#)
- [Breast Neoplasms](#)