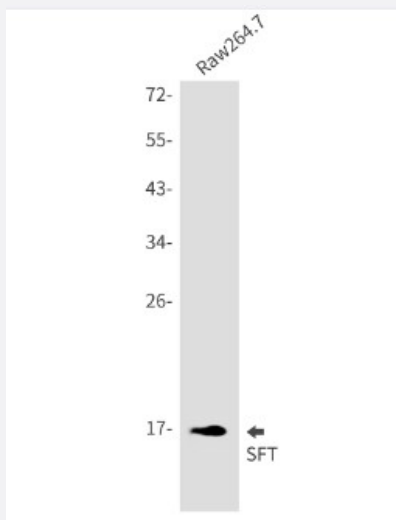


RecomAb™

UBE2D1 recombinant monoclonal antibody, clone R07-4E8

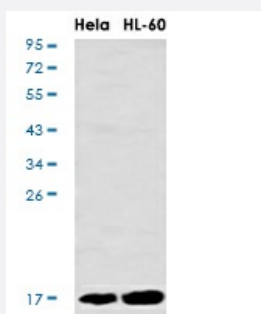
Catalog # RAB01363 Size 100 uL

Applications



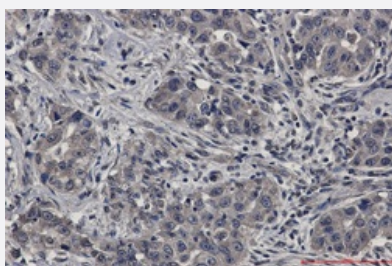
Western Blot

Western Blot analysis of Raw 264.7 cells with UBE2D1 recombinant monoclonal antibody, clone R07-4E8 (Cat # RAB01363).



Western Blot

Western blot analysis of SFT in HeLa, HL-60 lysates using SFT antibody.



Immunohistochemistry (Formalin/PFA-fixed paraffin-embedded sections)

Immunohistochemistry analysis of paraffin-embedded Human lung cancer using SFT antibody. High-pressure and temperature Sodium Citrate pH 6.0 was used for antigen retrieval.

Specification

Product Description	Rabbit recombinant monoclonal antibody raised against human UBE2D1.
Antibody Species	Rabbit
Immunogen	Original antibody is raised against recombinant protein corresponding to human UBE2D1.
Theoretical MW (kDa)	Calculated MW: 17 kD
Reactivity	Human
Form	Liquid
Purification	Affinity purification
Isotype	IgG
Recommend Usage	Immunohistochemistry (Formalin/PFA-fixed paraffin-embedded sections) Immunoprecipitation Western Blot The optimal working dilution should be determined by the end user.
Storage Buffer	In 50mM Tris-Glycine, pH 7.4, (0.15M NaCl, 40% Glycerol, 0.01% Sodium azide and 0.05% BSA)
Storage Instruction	Store at 4°C. For longer storage, aliquot and store at -20°C. Aliquot to avoid repeated freezing and thawing.
Note	This product contains sodium azide: a POISONOUS AND HAZARDOUS SUBSTANCE which should be handled by trained staff only.

Applications

- Western Blot

Western Blot analysis of Raw 264.7 cells with UBE2D1 recombinant monoclonal antibody, clone R07-4E8 (Cat # RAB01363).

- Western Blot

Western blot analysis of SFT in Hela, HL-60 lysates using SFT antibody.

- Immunohistochemistry (Formalin/PFA-fixed paraffin-embedded sections)

Immunohistochemistry analysis of paraffin-embedded Human lung cancer using SFT antibody. High-pressure and temperature Sodium Citrate pH 6.0 was used for antigen retrieval.

- Immunoprecipitation

Gene Info — UBE2D1

Entrez GeneID [7321](#)

Protein Accession# [P51668](#)

Gene Name UBE2D1

Gene Alias E2(17)KB1, SFT, UBC4/5, UBCH5, UBCH5A

Gene Description ubiquitin-conjugating enzyme E2D 1 (UBC4/5 homolog, yeast)

Omim ID [602961](#)

Gene Ontology [Hyperlink](#)

Gene Summary

The modification of proteins with ubiquitin is an important cellular mechanism for targeting abnormal or short-lived proteins for degradation. Ubiquitination involves at least three classes of enzymes: ubiquitin-activating enzymes, or E1s, ubiquitin-conjugating enzymes, or E2s, and ubiquitin-protein ligases, or E3s. This gene encodes a member of the E2 ubiquitin-conjugating enzyme family. This enzyme is closely related to a stimulator of iron transport (SFT), and is up-regulated in hereditary hemochromatosis. It also functions in the ubiquitination of the tumor-suppressor protein p53 and the hypoxia-inducible transcription factor HIF1alpha by interacting with the E1 ubiquitin-activating enzyme and the E3 ubiquitin-protein ligases. [provided by RefSeq]

Other Designations

OTTHUMP00000019631|stimulator of Fe transport|ubiquitin carrier protein|ubiquitin-conjugating enzyme E2-17 kDa 1|ubiquitin-conjugating enzyme E2D 1

Pathway

- [Ubiquitin mediated proteolysis](#)

Disease

- [Alzheimer disease](#)
- [Genetic Predisposition to Disease](#)