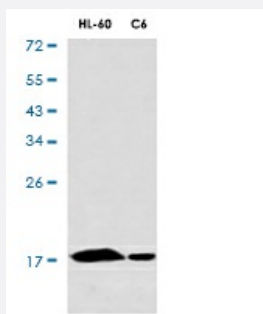


RecomAb™

# UBE2N recombinant monoclonal antibody, clone R05-5B0

Catalog # RAB01337      Size 100 uL

## Applications



### Western Blot

Western blot analysis of Ube2N/Ubc13 in HL-60, C6 lysates using Ube2N/Ubc13 antibody.

## Specification

<b>Product Description</b>	Rabbit recombinant monoclonal antibody raised against human UBE2N.
<b>Antibody Species</b>	Rabbit
<b>Immunogen</b>	Original antibody is raised against recombinant protein corresponding to human UBE2N.
<b>Theoretical MW (kDa)</b>	Calculated MW: 17 kD
<b>Reactivity</b>	Human
<b>Form</b>	Liquid
<b>Purification</b>	Affinity purification
<b>Isotype</b>	IgG
<b>Recommend Usage</b>	Immunocytochemistry Immunofluorescence Western Blot The optimal working dilution should be determined by the end user.
<b>Storage Buffer</b>	In 50mM Tris-Glycine, pH 7.4, (0.15M NaCl, 40% Glycerol, 0.01% Sodium azide and 0.05% BSA)

**Storage Instruction**

Store at 4°C. For longer storage, aliquot and store at -20°C.  
Aliquot to avoid repeated freezing and thawing.

**Note**

This product contains sodium azide: a POISONOUS AND HAZARDOUS SUBSTANCE which should be handled by trained staff only.

## Applications

- Western Blot

Western blot analysis of Ube2N/Ubc13 in HL-60, C6 lysates using Ube2N/Ubc13 antibody.

- Immunocytochemistry

- Immunofluorescence

## Gene Info — UBE2N

**Entrez GeneID**[7334](#)**Protein Accession#**[P61088](#)**Gene Name**

UBE2N

**Gene Alias**

MGC131857, MGC8489, UBC13, Ubch-ben

**Gene Description**

ubiquitin-conjugating enzyme E2N (UBC13 homolog, yeast)

**Omim ID**[603679](#)**Gene Ontology**[Hyperlink](#)**Gene Summary**

The modification of proteins with ubiquitin is an important cellular mechanism for targeting abnormal or short-lived proteins for degradation. Ubiquitination involves at least three classes of enzymes: ubiquitin-activating enzymes, or E1s, ubiquitin-conjugating enzymes, or E2s, and ubiquitin-protein ligases, or E3s. This gene encodes a member of the E2 ubiquitin-conjugating enzyme family. Studies in mouse suggest that this protein plays a role in DNA postreplication repair. [provided by RefSeq]

**Other Designations**

bendless-like ubiquitin conjugating enzyme|ubiquitin carrier protein N|ubiquitin-conjugating enzyme E2N|ubiquitin-conjugating enzyme E2N (homologous to yeast UBC13)|ubiquitin-protein ligase N|yeast UBC13 homolog

## Pathway

- [Ubiquitin mediated proteolysis](#)

## Disease

- [Diabetes Mellitus](#)