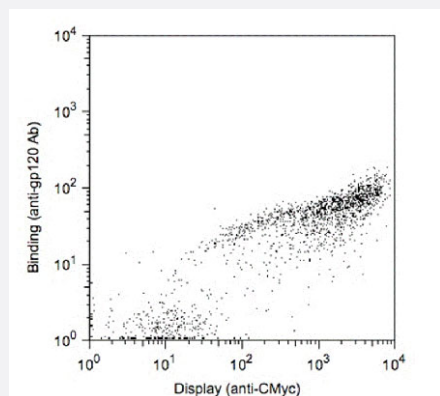


c-Myc tag polyclonal antibody

Catalog # PAB29202 Size 100 ug

Applications



Flow Cytometry

Yeast displaying C-terminally tagged gp120-C-Myc was analyzed by flow cytometry and demonstrated as dot-plot to show the relative labeling efficiency between c-Myc tag polyclonal antibody (Cat # PAB29202 and normal anti-gp120 antibody.

Specification

Product Description	Chicken polyclonal antibody raised against c-Myc tag.
Immunogen	A synthetic peptide (conjugated with KLH) corresponding to c-Myc tag.
Sequence	EQKLISEEDL
Host	Chicken
Reactivity	Human
Form	Liquid
Purification	Immunoaffinity purification
Isotype	IgY
Recommend Usage	ELISA (coating: 1:50-1:200; probing: 1:5000-1:20000) Flow Cytometry (1:100-1:300) Western Blot (1:5000) The optimal working dilution should be determined by the end user.

Storage Buffer	In PBS, pH 7.2 (0.09% sodium azide).
Storage Instruction	Store at -20°C. Aliquot to avoid repeated freezing and thawing.
Note	This product contains sodium azide: a POISONOUS AND HAZARDOUS SUBSTANCE which should be handled by trained staff only.

Applications

- Western Blot
- Enzyme-linked Immunoabsorbent Assay
- Flow Cytometry

Yeast displaying C-terminally tagged gp120-C-Myc was analyzed by flow cytometry and demonstrated as dot-plot to show the relative labeling efficiency between c-Myc tag polyclonal antibody (Cat # PAB29202) and normal anti-gp120 antibody.