

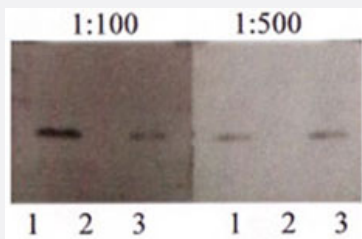
APP polyclonal antibody

Catalog # PAB12573 Size 100 uL

Applications

Western Blot

Western blot analysis of APP on 5 ng of peptide per lane using APP polyclonal antibody (Cat #PAB12573). Lane 1 : Abeta-40, lane 2 : Abeta-42, lane 3 : Abeta-40 and -42 mix.



Specification

Product Description Rabbit polyclonal antibody raised against synthetic peptide of APP.

Immunogen A synthetic peptide corresponding to APP.

Sequence GLMVGGVV

Host Rabbit

Reactivity Human, Mouse

Form Liquid

Quality Control Testing Antibody Reactive Against Synthetic Peptide.

Recommend Usage Immunoprecipitation (1:100)
Western Blot (1:500-1:1000)
The optimal working dilution should be determined by the end user.

Storage Buffer In antiserum (0.05% sodium azide)

Storage Instruction Store at -20°C or -80°C.
Aliquot to avoid repeated freezing and thawing.

Note

This product contains sodium azide: a POISONOUS AND HAZARDOUS SUBSTANCE which should be handled by trained staff only.

Applications

- Western Blot

Western blot analysis of APP on 5 ng of peptide per lane using APP polyclonal antibody (Cat #PAB12573). Lane 1 : Abeta-40, lane 2 : Abeta-42, lane 3 : Abeta-40 and -42 mix.

- Immunoprecipitation