

MAPKAP Kinase 2 polyclonal antibody

Catalog # PAB10263 Size 100 ug

Applications

Western Blot (Cell lysate)

Affinity purified MAPKAP Kinase 2 polyclonal antibody (Cat # PAB10263) detects MAPKAP Kinase 2 in unstimulated human HeLa whole cell lysate by western blot.

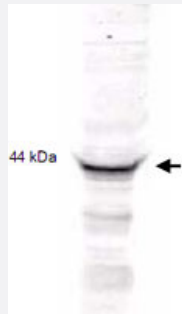
MAPKAP Kinase 2 polyclonal antibody used at a 1 : 2000 dilution to detect 20 ug of whole cell lysate containing MAPKAP Kinase 2.

This antibody detects a single 44 KDa protein as indicated in crude extracts prepared from either unstimulated or TNFalpha stimulated human HeLa cell lysates.

A 4-20% gradient gel was used to separate the protein by SDS-PAGE.

The protein was transferred to nitrocellulose using standard methods.

After blocking the membrane was probed with the primary antibody for 1 h at room temperature followed by washes and reaction with a 1 : 5,000 dilution of IRDye™800 conjugated Gt-a-Rabbit IgG [H&L] for 30 min at room temperature. LICOR's Odyssey® Infrared Imaging System was used to scan and process the image.



Specification

Product Description	Rabbit polyclonal antibody raised against synthetic peptide of MAPKAP Kinase 2.
Immunogen	A synthetic peptide (conjugated with KLH) corresponding to amino acids 310-325 of rabbit MAPKAP Kinase 2.
Sequence	MTSALATMRVDYEQIK
Host	Rabbit
Reactivity	Chicken, Clawed frog, Hamster, Human, Mouse, Rabbit, Rat

Specificity	This polyclonal anti-MAPKAP Kinase 2 antibody recognizes native and over-expressed protein found in various tissues and extracts.
Form	Liquid
Quality Control Testing	Antibody Reactive Against Synthetic Peptide.
Recommend Usage	ELISA (1:15000) Western Blot (1:2000) The optimal working dilution should be determined by the end user.
Storage Buffer	In 20 mM KH ₂ PO ₄ , 150 mM NaCl, pH 7.2 (0.01% sodium azide)
Storage Instruction	Store at 4°C. For long term storage store at -20°C. Aliquot to avoid repeated freezing and thawing.
Note	This product contains sodium azide: a POISONOUS AND HAZARDOUS SUBSTANCE which should be handled by trained staff only.

Applications

- Western Blot (Cell lysate)

Affinity purified MAPKAP Kinase 2 polyclonal antibody (Cat # PAB10263) detects MAPKAP Kinase 2 in unstimulated human HeLa whole cell lysate by western blot.

MAPKAP Kinase 2 polyclonal antibody used at a 1 : 2000 dilution to detect 20 ug of whole cell lysate containing MAPKAP Kinase 2.

This antibody detects a single 44 KDa protein as indicated in crude extracts prepared from either unstimulated or TNF α stimulated human HeLa cell lysates.

A 4-20% gradient gel was used to separate the protein by SDS-PAGE.

The protein was transferred to nitrocellulose using standard methods.

After blocking the membrane was probed with the primary antibody for 1 h at room temperature followed by washes and reaction with a 1 : 5,000 dilution of IRDye™ 800 conjugated Gt-a-Rabbit IgG [H&L] for 30 min at room temperature.

LICOR's Odyssey® Infrared Imaging System was used to scan and process the image.

- Enzyme-linked Immunoabsorbent Assay

Publication Reference

- [Retaining of the assembly capability of vimentin phosphorylated by mitogen-activated protein kinase-activated protein kinase-2.](#)

Cheng TJ, Tseng YF, Chang WM, Chang MD, Lai YK.

Journal of Cellular Biochemistry 2003 Jun; 89(3):589.

- [Inhibition of SAPK2a/p38 prevents hnRNP A0 phosphorylation by MAPKAP-K2 and its interaction with cytokine mRNAs.](#)

Rousseau S, Morrice N, Peggie M, Campbell DG, Gaestel M, Cohen P.

The EMBO Journal 2002 Dec; 21(23):6505.

- [MAPKAP kinase 2 is essential for LPS-induced TNF-alpha biosynthesis.](#)

Kotlyarov A, Neininger A, Schubert C, Eckert R, Birchmeier C, Volk HD, Gaestel M.

Nature Cell Biology 1999 Jun; 1(2):94.