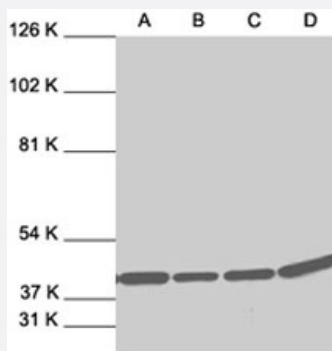


# Mapk1 polyclonal antibody

Catalog # PAB0825

Size 200 ug

## Applications



### Western Blot

Western blot analysis of Mapk1 polyclonal antibody (Cat # PAB0825) expression in A-431 (A) , HeLa (B) , HL-60 (C) and NIH/3T3 (D) whole cell lysates.

## Specification

<b>Product Description</b>	Rabbit polyclonal antibody raised against a synthetic peptide of Mapk1.
<b>Immunogen</b>	A synthetic peptide (conjugated with KLH) corresponding to C-terminus of rat Mapk1.
<b>Host</b>	Rabbit
<b>Reactivity</b>	Rat
<b>Specificity</b>	This antibody reacts with ERK2 p42 and to a lesser extent ERK1 p44.
<b>Form</b>	Liquid
<b>Recommend Usage</b>	Western Blot (1:400) The optimal working dilution should be determined by the end user.
<b>Storage Buffer</b>	In PBS (0.2% gelatin, 0.09% sodium azide)
<b>Storage Instruction</b>	Store at 4°C. Do not freeze.
<b>Note</b>	This product contains sodium azide: a POISONOUS AND HAZARDOUS SUBSTANCE which should be handled by trained staff only.

## Applications

- Western Blot (Cell lysate)

- Western Blot

Western blot analysis of Mapk1 polyclonal antibody (Cat # PAB0825) expression in A-431 (A) , HeLa (B) , HL-60 (C) and NIH/3T3 (D) whole cell lysates.

## Gene Info — Mapk1

Entrez GeneID	<a href="#">116590</a>
---------------	------------------------

Gene Name	Mapk1
-----------	-------

Gene Alias	Erk2
------------	------

Gene Description	mitogen activated protein kinase 1
------------------	------------------------------------

Gene Ontology	<a href="#">Hyperlink</a>
---------------	---------------------------

Other Designations	extracellular-signal-regulated kinase 2
--------------------	---