

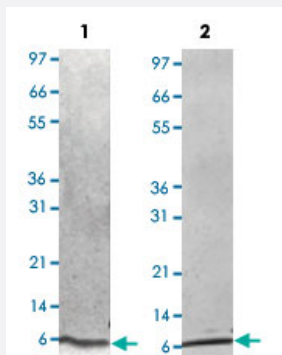
Bioactive

Igf1 (Rat) Recombinant Protein

Catalog # P4840

Size 50 ug

Applications



Lane 1: non-reducing conditions

Lane 2: reducing conditions

Result of activity analysis

Result of activity analysis

FDC-P1 cells were cultured with 0 to 250 ng/mL rat Igf1. Cell proliferation was measured after 48 hours and the linear portion of the curve was used to calculate the ED50.

Specification

Product Description	Rat Igf1 recombinant protein expressed in <i>Escherichia coli</i> .
Sequence	GPETLCGAELVDALQFVCGRGFYFNKPTGYGSSIRRAPQTGMVDECCFRSCDLRRLEMYCAPLK PTKSA
Host	<i>Escherichia coli</i>
Theoretical MW (kDa)	7.7
Form	Lyophilized
Preparation Method	<i>Escherichia coli</i> expression system
Endotoxin Level	< 0.1 EU/ug

Activity	The activity is determined by the dose dependent proliferation of FDC-P1 cells. The expected ED ₅₀ for this effect is 61-91 ng/mL.
Quality Control Testing	1 ug/lane in 4-20% Tris-Glycine gel stained with Coomassie Blue Lane 1: non-reducing conditions Lane 2: reducing conditions
Storage Buffer	No additive
Storage Instruction	Store at -20°C on dry atmosphere. After reconstitution with sterilized water, store at -20°C. Aliquot to avoid repeated freezing and thawing.
Note	Result of activity analysis Result of activity analysis FDC-P1 cells were cultured with 0 to 250 ng/mL rat Igf1. Cell proliferation was measured after 48 hours and the linear portion of the curve was used to calculate the ED50.

Applications

- Functional Study
- SDS-PAGE

Gene Info — Igf1

Entrez GeneID	24482
Protein Accession#	P08025
Gene Name	Igf1
Gene Alias	-
Gene Description	insulin-like growth factor 1
Gene Ontology	Hyperlink
Other Designations	Insulin-like growth factor I; somatomedin