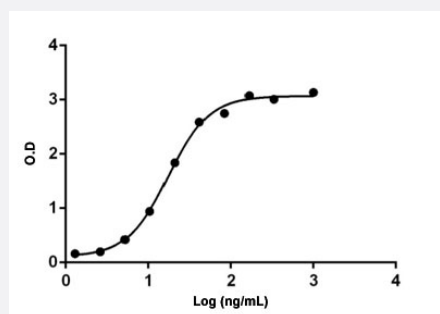


Anti-Daratumumab monoclonal antibody, clone 11F2

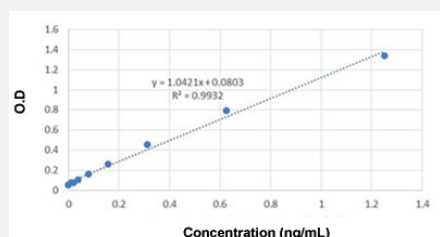
Catalog # MAB23092 Size 40 ug

Applications



Enzyme-linked Immunoabsorbent Assay

ELISA binding of Anti-Daratumumab monoclonal antibody, clone 11F2 (Cat # MAB23092) with Daratumumab. Coating antigen: Daratumumab, 1 ug/mL. Anti-Daratumumab monoclonal antibody, clone 11F2 dilutions start from 1000 ng/mL. $EC_{50} = 17.40$ ng/mL. While the antibody does not recognize the human IgG Fc fragment (data not shown).



Sandwich ELISA

The Sandwich ELISA assay is developed by using Anti-Daratumumab monoclonal antibody, clone 11F2 (Cat # MAB23092) and Anti-Daratumumab monoclonal antibody, clone 6A3 (Cat # MAB23093) as the capture and detection antibodies, respectively. In this ELISA assay, Anti-Daratumumab monoclonal antibody, clone 6A3 was labeled with Biotin. The sensitivity of detecting Daratumumab is up to 0.039 ng/mL.

Specification

Product Description	Mouse monoclonal antibody raised against Daratumumab. Target gene is CD38.
Immunogen	Daratumumab.
Host	Mouse
Specificity	The product is specific for Daratumumab. The antibody is recommended as a capture antibody in a pharmacokinetic (PK) bridging assay with detection antibody : Anti-Daratumumab monoclonal antibody, clone 6A3 (Cat # MAB23093).
Form	Lyophilized

Preparation Method	The antibody is produced from a hybridoma resulting from the fusion of partner and B-lymphocytes obtained from a mouse immunized with Daratumumab.
Purification	Protein A purification
Isotype	IgG1
Recommend Usage	ELISA (0.01-1 ug/mL (Direct/Indirect)) Sandwich ELISA The optimal working dilution should be determined by the end user.
Inhibitory IC50	Non-inhibitory
Storage Buffer	Lyophilized from PBS, pH 7.4 (0.02% sodium azide).
Storage Instruction	Store at -20°C. The lyophilized product remains stable up to 1 year at -20°C from date of receipt. After reconstitution with deionized water (or equivalent) to a final concentration of 0.5 mg/mL, it can be stored for 2-3 weeks at 2-8°C or for up to 12 months at -20°C or below. Aliquot to avoid repeated freezing and thawing.
Note	This product contains sodium azide: a POISONOUS AND HAZARDOUS SUBSTANCE which should be handled by trained staff only.

Applications

- Enzyme-linked Immunoabsorbent Assay

ELISA binding of Anti-Daratumumab monoclonal antibody, clone 11F2 (Cat # MAB23092) with Daratumumab. Coating antigen: Daratumumab, 1 ug/mL. Anti-Daratumumab monoclonal antibody, clone 11F2 dilutions start from 1000 ng/mL. EC₅₀ = 17.40 ng/mL. While the antibody does not recognize the human IgG Fc fragment (data not shown).

- Sandwich ELISA

The Sandwich ELISA assay is developed by using Anti-Daratumumab monoclonal antibody, clone 11F2 (Cat # MAB23092) and Anti-Daratumumab monoclonal antibody, clone 6A3 (Cat # MAB23093) as the capture and detection antibodies, respectively. In this ELISA assay, Anti-Daratumumab monoclonal antibody, clone 6A3 was labeled with Biotin. The sensitivity of detecting Daratumumab is up to 0.039 ng/mL.

Gene Info — CD38

Entrez GeneID	952
Gene Name	CD38
Gene Alias	T10
Gene Description	CD38 molecule

Omim ID	107270
Gene Ontology	Hyperlink
Gene Summary	CD38 is a novel multifunctional ectoenzyme widely expressed in cells and tissues especially in leukocytes. CD38 also functions in cell adhesion, signal transduction and calcium signaling. [provided by RefSeq]
Other Designations	ADP-ribosyl cyclase/cyclic ADP-ribose hydrolase CD38 antigen CD38 antigen (p45) cyclic ADP-ribose hydrolase

Pathway

- [Calcium signaling pathway](#)
- [Hematopoietic cell lineage](#)
- [Metabolic pathways](#)
- [Nicotinate and nicotinamide metabolism](#)

Disease

- [Cell Transformation](#)
- [Child Development Disorders](#)
- [Diabetes Mellitus](#)
- [Genetic Predisposition to Disease](#)
- [Leukemia](#)
- [Lupus Erythematosus](#)
- [Lymphoma](#)
- [Osteoporosis](#)