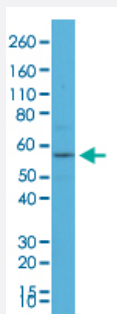


RecomAb™

KRT4 monoclonal antibody, clone RM355

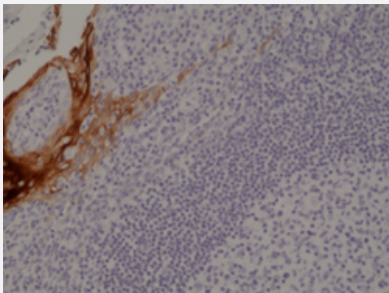
Catalog # MAB21992 Size 100 uL

Applications



Western Blot (Cell lysate)

Western Blot (Cell lysate) analysis of A431 cell lysates.



Immunohistochemistry (Formalin/PFA-fixed paraffin-embedded sections)

Immunohistochemical staining of human tonsil.

Specification

Product Description	Rabbit recombinant monoclonal antibody raised against human KRT4.
Antibody Species	Rabbit
Immunogen	Original antibody is raised against a synthetic peptide corresponding to C-terminus of human KRT4.
Reactivity	Human
Specificity	This antibody reacts to human cytokeratin-4.
Form	Liquid

Purification	Protein A purification
Isotype	IgG
Recommend Usage	Immunohistochemistry (Formalin/PFA-fixed paraffin-embedded sections) (1:500-1000) Western Blot (1:100-1000) The optimal working dilution should be determined by the end user.
Storage Buffer	In PBS (50% glycerol, 1% BSA, 0.09% sodium azide)
Storage Instruction	Store at -20°C. Aliquot to avoid repeated freezing and thawing.
Note	This product contains sodium azide: a POISONOUS AND HAZARDOUS SUBSTANCE which should be handled by trained staff only.

Applications

- Western Blot (Cell lysate)

Western Blot (Cell lysate) analysis of A431 cell lysates.

- Immunohistochemistry (Formalin/PFA-fixed paraffin-embedded sections)

Immunohistochemical staining of human tonsil.

Gene Info — KRT4

Entrez GeneID	3851
Gene Name	KRT4
Gene Alias	CK4, CYK4, FLJ31692, K4
Gene Description	keratin 4
Omim ID	123940 193900
Gene Ontology	Hyperlink
Gene Summary	The protein encoded by this gene is a member of the keratin gene family. The type II cytokeratins consist of basic or neutral proteins which are arranged in pairs of heterotypic keratin chains coexpressed during differentiation of simple and stratified epithelial tissues. This type II cytokeratin is specifically expressed in differentiated layers of the mucosal and esophageal epithelia with family member KRT13. Mutations in these genes have been associated with White Sponge Nevus, characterized by oral, esophageal, and anal leukoplakia. The type II cytokeratins are clustered in a region of chromosome 12q12-q13. [provided by RefSeq]

Other Designationscytokeratin 4|keratin, type II cytoskeletal 4
