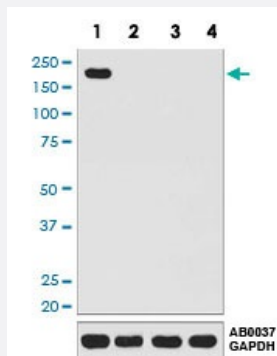


# CRISPR-Cas9 SP monoclonal antibody, clone ABCI-3

Catalog # MAB19921      Size 100 uL

## Applications



### Western Blot (Cell lysate)

Western blot analysis of (1) 293T cell lysate transfected with CRISPR-Cas9; (2) 293T cell lysate; (3) 3T3 cell lysate; (4) PC12 cell lysate with CRISPR-Cas9 SP monoclonal antibody.

## Specification

<b>Product Description</b>	Rabbit monoclonal antibody raised against synthetic peptide of Streptococcus pyogenes CRISPR-Cas9 SP.
<b>Immunogen</b>	A synthetic peptide corresponding to Streptococcus pyogenes CRISPR-Cas9 SP.
<b>Host</b>	Rabbit
<b>Reactivity</b>	Streptococcus pyogenes
<b>Form</b>	Liquid
<b>Purification</b>	Affinity purification
<b>Isotype</b>	IgG
<b>Recommend Usage</b>	Flow Cytometry (1:60) Immunocytochemistry (1:50-1:200) Immunofluorescence (1:50-1:200) Immunohistochemistry (1:50-1:200) Western Blot (1:1000-1:5000) The optimal working dilution should be determined by the end user.

<b>Storage Buffer</b>	In PBS, pH 7.4, 150mM NaCl, 0.02% sodium azide and 50% glycerol.
<b>Storage Instruction</b>	Store at -20°C for one year. After reconstitution, at 4°C for one month. It can also be aliquotted and stored frozen at -20°C for a longer time. Avoid repeated freezing and thawing.
<b>Note</b>	This product contains sodium azide: a POISONOUS AND HAZARDOUS SUBSTANCE which should be handled by trained staff only.

## Applications

- Western Blot (Cell lysate)

Western blot analysis of (1) 293T cell lysate transfected with CRISPR-Cas9; (2) 293T cell lysate; (3) 3T3 cell lysate; (4) PC12 cell lysate with CRISPR-Cas9 SP monoclonal antibody.

- Immunohistochemistry (Formalin/PFA-fixed paraffin-embedded sections)

- Immunocytochemistry

- Immunofluorescence

- Flow Cytometry