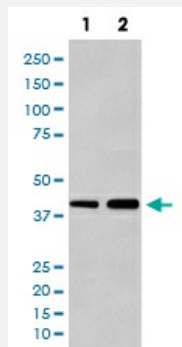


ACTA2 monoclonal antibody, clone EO-1

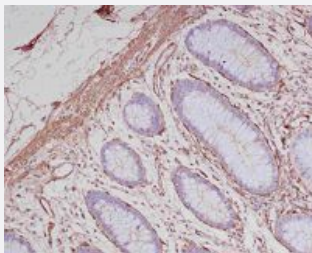
Catalog # MAB19544 Size 100 uL

Applications



Western Blot (Cell lysate)

Western blot analysis of (1)A549 cell lysate; (2)C2C12 cell lysate using alpha-SMA antibody with ACTA2 monoclonal antibody.



Immunohistochemistry (Formalin/PFA-fixed paraffin-embedded sections)

Immunohistochemical staining of paraffin-embedded human colon with ACTA2 monoclonal antibody.

Specification

Product Description	Rabbit monoclonal antibody raised against synthetic peptide of human ACTA2.
Immunogen	A synthetic peptide corresponding to human ACTA2.
Host	Rabbit
Reactivity	Human, Mouse, Rat
Form	Liquid
Purification	Affinity purification
Isotype	IgG

Recommend Usage	Immunocytochemistry (1:50-1:200) Immunofluorescence (1:50-1:200) Immunohistochemistry (1:50-1:200) Flow Cytometry (1:20) Western Blot (1:1000-1:10000) The optimal working dilution should be determined by the end user.
Storage Buffer	In PBS, pH 7.4, 150mM NaCl, 0.02% sodium azide and 50% glycerol.
Storage Instruction	Store at -20°C for one year. After reconstitution, at 4°C for one month. It can also be aliquotted and stored frozen at -20°C for a longer time. Avoid repeated freezing and thawing.
Note	This product contains sodium azide: a POISONOUS AND HAZARDOUS SUBSTANCE which should be handled by trained staff only.

Applications

- Western Blot (Cell lysate)

Western blot analysis of (1)A549 cell lysate; (2)C2C12 cell lysate using alpha-SMA antibody with ACTA2 monoclonal antibody.

- Immunohistochemistry (Formalin/PFA-fixed paraffin-embedded sections)

Immunohistochemical staining of paraffin-embedded human colon with ACTA2 monoclonal antibody.

- Immunocytochemistry

- Immunofluorescence

- Flow Cytometry

Gene Info — ACTA2

Entrez GeneID	59
Protein Accession#	P62736
Gene Name	ACTA2
Gene Alias	AAT6, ACTSA
Gene Description	actin, alpha 2, smooth muscle, aorta
Omim ID	102620

Gene Ontology

[Hyperlink](#)

Gene Summary

The protein encoded by this gene belongs to the actin family of proteins, which are highly conserved proteins that play a role in cell motility, structure and integrity. Alpha, beta and gamma actin isoforms have been identified, with alpha actins being a major constituent of the contractile apparatus, while beta and gamma actins are involved in the regulation of cell motility. This actin is an alpha actin that is found in skeletal muscle. Defects in this gene cause aortic aneurysm familial thoracic type 6. Multiple alternatively spliced variants, encoding the same protein, have been identified. [provided by RefSeq]

Other Designations

OTTHUMP00000020042|alpha 2 actin|alpha-cardiac actin|growth-inhibiting gene 46

Pathway

- [Vascular smooth muscle contraction](#)

Disease

- [Alzheimer Disease](#)
- [Cardiovascular Diseases](#)
- [Diabetes Mellitus](#)
- [Edema](#)
- [Genetic Predisposition to Disease](#)