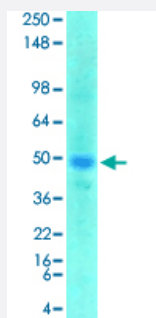


# Slc38a1 monoclonal antibody, clone S104-32 (ATTO 390)

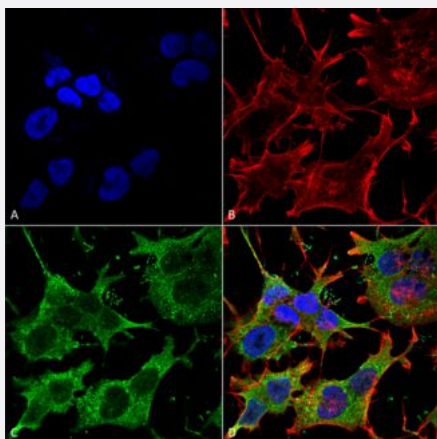
Catalog # MAB18253      Size 100 ug

## Applications



### Western Blot (Tissue lysate)

Western Blot analysis of rat brain membrane lysate with Slc38a1 monoclonal antibody, clone S104-32 (ATTO 390) (Cat # MAB18253).



### Immunocytochemistry

Immunocytochemical staining of SK-N-BE with Slc38a1 monoclonal antibody, clone S104-32 (ATTO 390) (Cat # MAB18253). (A) DAPI (blue) nuclear stain (B) Phalloidin Texas Red F-Actin stain (C) Slc38a1 Antibody and (D) Composite.

## Specification

|                            |   |
|----------------------------|---|
| <b>Product Description</b> | Mouse monoclonal antibody raised against partial recombinant rat Slc38a1. |
| <b>Immunogen</b>           | Recombinant protein corresponding to amino acids 1-63 of rat Slc38a1.     |
| <b>Host</b>                | Mouse   |
| <b>Reactivity</b>          | Rat   |
| <b>Form</b>                | Liquid  |

|                     |  |
|---------------------|--|
| Conjugation         | ATTO 390   |
| Purification        | Protein G Purification   |
| Isotype             | IgG1   |
| Recommend Usage     | Immunocytochemistry<br>Immunofluorescence<br>Immunohistochemistry (Formalin/PFA-fixed paraffin-embedded sections)<br>Western Blot (1:1000)<br>The optimal working dilution should be determined by the end user. |
| Storage Buffer      | In PBS, pH 7.4 (50% glycerol, 0.09% sodium azide).   |
| Storage Instruction | Store at -20°C.  |
| Note                | This product contains sodium azide: a POISONOUS AND HAZARDOUS SUBSTANCE which should be handled by trained staff only.   |

## Applications

- Western Blot (Tissue lysate)

Western Blot analysis of rat brain membrane lysate with Slc38a1 monoclonal antibody, clone S104-32 (ATTO 390) (Cat # MAB18253).

- Immunohistochemistry (Formalin/PFA-fixed paraffin-embedded sections)

- Immunocytochemistry

Immunocytochemical staining of SK-N-BE with Slc38a1 monoclonal antibody, clone S104-32 (ATTO 390) (Cat # MAB18253).  
(A) DAPI (blue) nuclear stain (B) Phalloidin Texas Red F-Actin stain (C) Slc38a1 Antibody and (D) Composite.

- Immunofluorescence

## Gene Info — Slc38a1

|                    |                                    |
|--------------------|------------------------------------|
| Entrez GeneID      | <a href="#">170567</a>             |
| Protein Accession# | <a href="#">Q9JM15</a>             |
| Gene Name          | Slc38a1                            |
| Gene Alias         | Ata1, GlnT, Sat1                   |
| Gene Description   | solute carrier family 38, member 1 |

**Gene Ontology**[Hyperlink](#)**Gene Summary**

O

**Other Designations**

amino acid transporter system A1