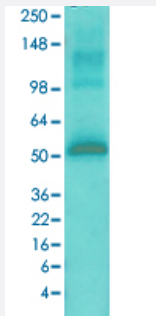


# Camk2a monoclonal antibody, clone 6G9 (ATTO 390)

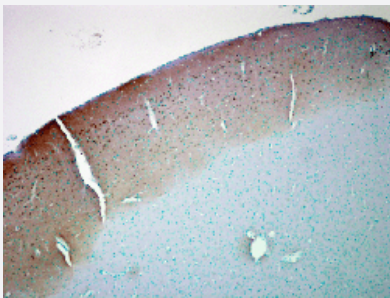
Catalog # MAB18034      Size 100 ug

## Applications



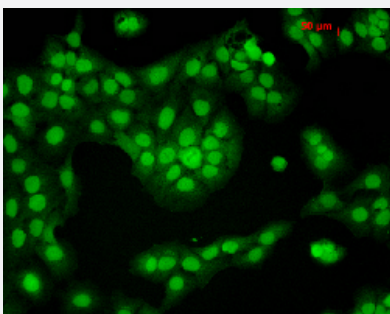
### Western Blot (Tissue lysate)

Western Blot analysis of rat brain membrane lysate with Camk2a monoclonal antibody, clone 6G9 (ATTO 390) (Cat # MAB18034).



### Immunohistochemistry (Formalin/PFA-fixed paraffin-embedded sections)

Immunohistochemical staining (Formalin-fixed paraffin-embedded sections) of human colon cancer with Camk2a monoclonal antibody, clone 6G9 (ATTO 390) (Cat # MAB18034).



### Immunocytochemistry

Immunocytochemical staining of HaCaT with Camk2a monoclonal antibody, clone 6G9 (ATTO 390) (Cat # MAB18034).

## Specification

### Product Description

Mouse monoclonal antibody raised against rat Camk2a.

### Immunogen

Partially purified rat Camk2a.

|                     |  |
|---------------------|--|
| Host                | Mouse  |
| Reactivity          | Rat  |
| Form                | Liquid   |
| Conjugation         | ATTO 390   |
| Purification        | Protein G purification   |
| Isotype             | IgG1   |
| Recommend Usage     | ELISA<br>Immunocytochemistry (1:50)<br>Immunofluorescence (1:50)<br>Immunohistochemistry (Formalin/PFA-fixed paraffin-embedded sections) (1:2000)<br>Immunoprecipitation<br>Radioimmunoassay<br>Western Blot (1:10000)<br>The optimal working dilution should be determined by the end user. |
| Storage Buffer      | In PBS, pH 7.4 (50% glycerol, 0.09% sodium azide).   |
| Storage Instruction | Store at -20°C.  |
| Note                | This product contains sodium azide: a POISONOUS AND HAZARDOUS SUBSTANCE which should be handled by trained staff only.   |

## Applications

- Western Blot (Tissue lysate)

Western Blot analysis of rat brain membrane lysate with Camk2a monoclonal antibody, clone 6G9 (ATTO 390) (Cat # MAB18034).

- Immunohistochemistry (Formalin/PFA-fixed paraffin-embedded sections)

Immunohistochemical staining (Formalin-fixed paraffin-embedded sections) of human colon cancer with Camk2a monoclonal antibody, clone 6G9 (ATTO 390) (Cat # MAB18034).

- Immunocytochemistry

Immunocytochemical staining of HaCaT with Camk2a monoclonal antibody, clone 6G9 (ATTO 390) (Cat # MAB18034).

- Immunofluorescence

- Immunoprecipitation

- Enzyme-linked Immunoabsorbent Assay
- Radioimmunoassay

## Gene Info — Camk2a

**Entrez GeneID** [25400](#)

**Protein Accession#** [P11275](#)

**Gene Name** Camk2a

**Gene Alias** PK2CDD, PKCCD

**Gene Description** calcium/calmodulin-dependent protein kinase II alpha

**Gene Ontology** [Hyperlink](#)

**Other Designations** Ca<sup>2+</sup>/calmodulin-dependent protein kinase II alpha|alpha CaM kinase II|calcium/calmodulin-dependent protein kinase (CaM kinase) II alpha|calcium/calmodulin-dependent protein kinase II alpha subunit