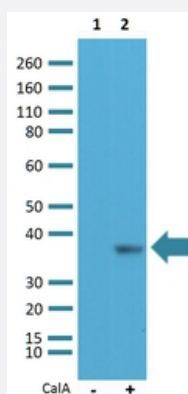


RecomAb™

# EIF2S1 (phospho S51) monoclonal antibody, clone RM298

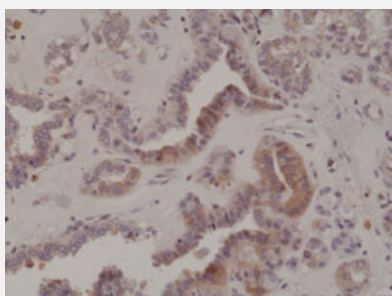
Catalog # MAB16924      Size 100 uL

## Applications



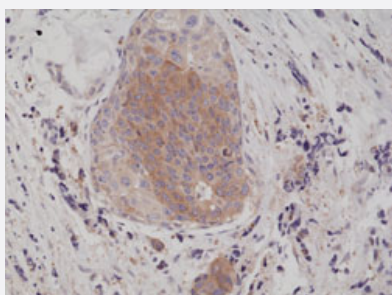
### Western Blot (Cell lysate)

Western Blot (Cell lysate) analysis of (1) HeLa cells nontreated with Calyculin A (CalA), (2) HeLa cells treated with Calyculin A (CalA).



### Immunohistochemistry (Formalin/PFA-fixed paraffin-embedded sections)

Immunohistochemical staining of human thyroid cancer.



### Immunohistochemistry (Formalin/PFA-fixed paraffin-embedded sections)

Immunohistochemical staining of human breast cancer.

## Specification

<b>Product Description</b>	Rabbit recombinant monoclonal antibody raised against human EIF2S1.
<b>Antibody Species</b>	Rabbit
<b>Immunogen</b>	Original antibody is raised against a synthetic phosphopeptide corresponding to residues surrounding Ser51 of human EIF2S1.
<b>Reactivity</b>	Human
<b>Specificity</b>	This antibody reacts to human eIF-2 $\alpha$ (eukaryotic translation initiation factor 2 subunit alpha) only when phosphorylated at Ser51. There is no cross-reactivity to eIF-2 $\alpha$ not phosphorylated at Ser51. This antibody may also react to mouse or rat Phospho-eIF-2 $\alpha$ (Ser51), as predicted by immunogen homology.
<b>Form</b>	Liquid
<b>Purification</b>	Protein A purification
<b>Isotype</b>	IgG
<b>Recommend Usage</b>	Immunohistochemistry (Formalin/PFA-fixed paraffin-embedded sections) (1:100-200) Western Blot (1:100-200) The optimal working dilution should be determined by the end user.
<b>Storage Buffer</b>	In PBS (50% glycerol, 1% BSA, 0.09% sodium azide)
<b>Storage Instruction</b>	Store at -20°C. Aliquot to avoid repeated freezing and thawing.
<b>Note</b>	This product contains sodium azide: a POISONOUS AND HAZARDOUS SUBSTANCE which should be handled by trained staff only.

## Applications

- Western Blot (Cell lysate)

Western Blot (Cell lysate) analysis of (1) HeLa cells nontreated with Calyculin A (CalA), (2) HeLa cells treated with Calyculin A (CalA).

- Immunohistochemistry (Formalin/PFA-fixed paraffin-embedded sections)

Immunohistochemical staining of human thyroid cancer.

- Immunohistochemistry (Formalin/PFA-fixed paraffin-embedded sections)

Immunohistochemical staining of human breast cancer.

## Gene Info — EIF2S1

Entrez GeneID	<a href="#">1965</a>
Gene Name	EIF2S1
Gene Alias	EIF-2, EIF-2A, EIF-2alpha, EIF2, EIF2A
Gene Description	eukaryotic translation initiation factor 2, subunit 1 alpha, 35kDa
Omim ID	<a href="#">603907</a>
Gene Ontology	<a href="#">Hyperlink</a>
Gene Summary	<p>The translation initiation factor eIF2 catalyzes the first regulated step of protein synthesis initiation, promoting the binding of the initiator tRNA to 40S ribosomal subunits. Binding occurs as a ternary complex of methionyl-tRNA, eIF2, and GTP. eIF2 is composed of 3 nonidentical subunits, alpha (36 kD), beta (38 kD, MIM 603908), and gamma (52 kD, MIM 300161). The rate of formation of the ternary complex is modulated by the phosphorylation state of eIF2-alpha (Ernst et al., 1987 [PubMed 2948954]).[supplied by OMIM]</p>
Other Designations	eIF-2-alpha eukaryotic translation initiation factor 2, subunit 1 (alpha, 35kD )

## Disease

- [Hepatitis B](#)