

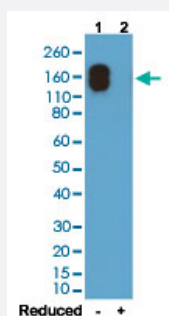
RecomAb™

Mouse IgG2a (kappa) monoclonal antibody, clone RM107 (Biotin)

Catalog # MAB14936

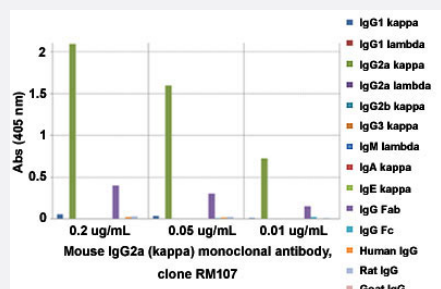
Size 50 ug

Applications



Western Blot

Western blot analysis of Lane 1: nonreduced (-) and Lane 2: reduced (+) mouse IgG2a (kappa) (20 ng/lane) with Mouse IgG2a (kappa) monoclonal antibody, clone RM107 (Biotin) (Cat # MAB14936) at 0.2 ug/mL working concentration. This antibody only reacts to nonreduced mouse IgG2a (kappa).



Enzyme-linked Immunoabsorbent Assay

ELISA analysis of Mouse IgG2a (kappa) monoclonal antibody, clone RM107 (Cat # MAB12767) at the following concentrations: 0.2 ug/mL, 0.05 ug/mL, and 0.01 ug/mL. The plate was coated with 50 ng/well of different immunoglobulins and the result shows this antibody reacts to the Fab region of mouse IgG2a (kappa); no cross reactivity with IgG2a (lambda), IgG1, IgG3, IgM, IgA, IgE, human IgG, rat IgG, or goat IgG. An alkaline phosphatase conjugated anti-rabbit IgG as the secondary antibody.

Enzyme-linked Immunoabsorbent Assay

A titer ELISA of mouse IgG2ak. The plate was coated with different amounts of mouse IgG2ak. A serial dilution of Mouse IgG2a (kappa) monoclonal antibody, clone RM107 (Biotin) (Cat# MAB14936) was used as the primary antibody. An alkaline phosphatase conjugated anti-rabbit IgG as the secondary antibody.

Specification

Product Description

Rabbit recombinant monoclonal antibody raised against mouse IgG2a (kappa).

Antibody Species	Rabbit
Immunogen	Original antibody is raised against mouse IgG.
Sequence	N/A
Reactivity	Mouse
Form	Liquid
Conjugation	Biotin
Purification	Protein A purification
Isotype	IgG
Recommend Usage	ELISA (0.005-0.2 ug/mL) Flow Cytometry Immunocytochemistry (0.5-2 ug/mL) Immunohistochemistry (0.5-2 ug/mL) Immunoprecipitation Western Blotting (0.1-0.5 ug/mL) The optimal working dilution should be determined by the end user.
Storage Buffer	In PBS (50% glycerol, 1% BSA, 0.09% sodium azide)
Storage Instruction	Store at -20°C. Aliquot to avoid repeated freezing and thawing.
Note	This product contains sodium azide: a POISONOUS AND HAZARDOUS SUBSTANCE which should be handled by trained staff only.

Applications

- Western Blot

Western blot analysis of Lane 1: nonreduced (-) and Lane 2: reduced (+) mouse IgG2a (kappa) (20 ng/lane) with Mouse IgG2a (kappa) monoclonal antibody, clone RM107 (Biotin) (Cat # MAB14936) at 0.2 ug/mL working concentration. This antibody only reacts to nonreduced mouse IgG2a (kappa).

- Immunohistochemistry

- Immunocytochemistry

- Immunoprecipitation

- Enzyme-linked Immunoabsorbent Assay

ELISA analysis of Mouse IgG2a (kappa) monoclonal antibody, clone RM107 (Cat # MAB12767) at the following concentrations: 0.2 ug/mL, 0.05 ug/mL, and 0.01 ug/mL. The plate was coated with 50 ng/well of different immunoglobulins and the result shows this antibody reacts to the Fab region of mouse IgG2a (kappa); no cross reactivity with IgG2a (lambda), IgG1, IgG3, IgM, IgA, IgE, human IgG, rat IgG, or goat IgG. An alkaline phosphatase conjugated anti-rabbit IgG as the secondary antibody.

- Enzyme-linked Immunoabsorbent Assay

A titer ELISA of mouse IgG2ak. The plate was coated with different amounts of mouse IgG2ak. A serial dilution of Mouse IgG2a (kappa) monoclonal antibody, clone RM107 (Biotin) (Cat# MAB14936) was used as the primary antibody. An alkaline phosphatase conjugated anti- rabbit IgG as the secondary antibody.

- Flow Cytometry

Gene Info — Igh-1a

Entrez GeneID	380793
---------------	------------------------

Protein Accession#	P01863
--------------------	------------------------

Gene Name	Igh-1a
-----------	--------

Gene Alias	1810060O09Rik, IGHG2A, Igh-1, MGC102662, MGC118125, MGC18977
------------	--

Gene Description	immunoglobulin heavy chain 1a (serum IgG2a)
------------------	---

Gene Ontology	Hyperlink
---------------	---------------------------

Other Designations	-
--------------------	---