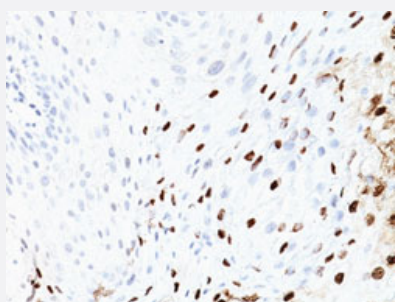


Human papilloma virus type 16 monoclonal antibody, clone SPM405

Catalog # MAB13199 Size 100 ug

Applications



Immunohistochemistry (Formalin/PFA-fixed paraffin-embedded sections)

Immunohistochemical staining (Formalin-fixed paraffin-embedded sections) of human uterine cervix with Human papilloma virus type 16 monoclonal antibody, clone SPM405 (Cat # MAB13199).

Specification

Product Description	Mouse monoclonal antibody raised against human papilloma virus type 16.
Immunogen	Recombinant major capsid protein L1 from human papilloma virus type 16.
Host	Mouse
Theoretical MW (kDa)	57
Reactivity	Human papilloma virus (HPV)
Form	Liquid
Purification	Protein A/G purification
Isotype	IgG2a, kappa
Recommend Usage	Immunofluorescence (0.5-1 ug/mL) Immunohistochemistry (Formalin/PFA-fixed paraffin-embedded sections) (0.5-1 ug/mL) The optimal working dilution should be determined by the end user.
Storage Buffer	In 10 mM PBS (0.05% BSA, 0.05% sodium azide).

Storage Instruction

Store at 4°C.

Note

This product contains sodium azide: a POISONOUS AND HAZARDOUS SUBSTANCE which should be handled by trained staff only.

Applications

- Immunohistochemistry (Formalin/PFA-fixed paraffin-embedded sections)

Immunohistochemical staining (Formalin-fixed paraffin-embedded sections) of human uterine cervix with Human papilloma virus type 16 monoclonal antibody, clone SPM405 (Cat # MAB13199).

- Immunofluorescence