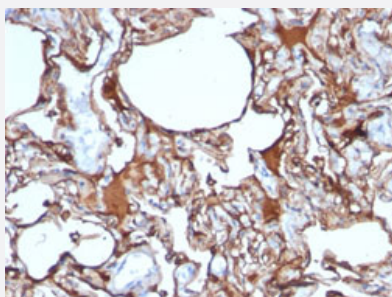


MCAM monoclonal antibody, clone SPM620

Catalog # MAB13105 Size 100 ug

Applications



Immunohistochemistry (Formalin/PFA-fixed paraffin-embedded sections)

Immunohistochemical staining (Formalin-fixed paraffin-embedded sections) of human melanoma with MCAM monoclonal antibody, clone SPM620 (Cat # MAB13105).

Specification

Product Description	Mouse monoclonal antibody raised against full length recombinant human MCAM.
Immunogen	Recombinant protein corresponding to full length human MCAM.
Host	Mouse
Theoretical MW (kDa)	130
Reactivity	Human
Form	Liquid
Purification	Protein A/G purification
Isotype	IgG1, kappa
Recommend Usage	Flow Cytometry (0.5-1 ug/10 ⁶ cells in 0.1 mL) Immunofluorescence (0.5-1 ug/mL) Immunohistochemistry (Formalin/PFA-fixed paraffin-embedded sections) (0.5-1 ug/mL) The optimal working dilution should be determined by the end user.
Storage Buffer	In 10 mM PBS (0.05% BSA, 0.05% sodium azide).

Storage Instruction

Store at 4°C.

Note

This product contains sodium azide: a POISONOUS AND HAZARDOUS SUBSTANCE which should be handled by trained staff only.

Applications

- Immunohistochemistry (Formalin/PFA-fixed paraffin-embedded sections)

Immunohistochemical staining (Formalin-fixed paraffin-embedded sections) of human melanoma with MCAM monoclonal antibody, clone SPM620 (Cat # MAB13105).

- Immunofluorescence

- Flow Cytometry

Gene Info — MCAM

Entrez GeneID[4162](#)**Protein Accession#**[P43121](#)**Gene Name**

MCAM

Gene Alias

CD146, MUC18

Gene Description

melanoma cell adhesion molecule

Omim ID[155735](#)**Gene Ontology**[Hyperlink](#)**Other Designations**

Gicerin|melanoma adhesion molecule