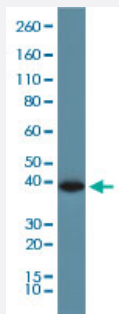


RecomAb™

# GAPDH monoclonal antibody, clone RM114

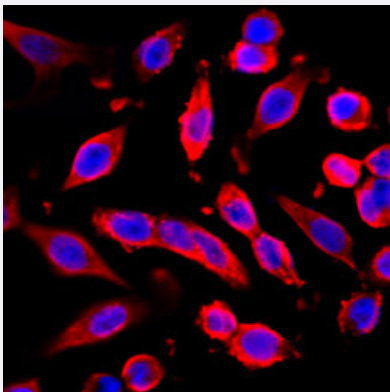
Catalog # MAB12829      Size 100 uL

## Applications



### Western Blot (Cell lysate)

Western blot analysis of A431 cells using GAPDH monoclonal antibody, clone RM114 (Cat # MAB12829) at 1:1000 dilution.



### Immunocytochemistry

Immunocytochemistry staining of A431 cells with GAPDH monoclonal antibody, clone RM114 (Cat # MAB12829) (Red) at 1:200 dilution. Nuclear DNA was stained with DAPI (Blue).

## Specification

Product Description	Rabbit recombinant monoclonal antibody raised against of human GAPDH.
Antibody Species	Rabbit
Immunogen	Original antibody is raised against a synthetic peptide corresponding to C-terminus region of human GAPDH.
Sequence	N/A
Form	Liquid

<b>Purification</b>	Protein A affinity purification
<b>Isotype</b>	IgG
<b>Recommend Usage</b>	ELISA Flow Cytometry Immunocytochemistry (1:200) Immunohistochemistry (1:400-1:4000) Immunoprecipitation (1:200) Western Blot (1:1000) The optimal working dilution should be determined by the end user.
<b>Storage Buffer</b>	In PBS (50% glycerol, 1% BSA, 0.09% sodium azide)
<b>Storage Instruction</b>	Store at -20°C. Aliquot to avoid repeated freezing and thawing.
<b>Note</b>	This product contains sodium azide: a POISONOUS AND HAZARDOUS SUBSTANCE which should be handled by trained staff only.

## Applications

- Western Blot (Cell lysate)

Western blot analysis of A431 cells using GAPDH monoclonal antibody, clone RM114 (Cat # MAB12829) at 1:1000 dilution.

- Immunohistochemistry

- Immunocytochemistry

Immunocytochemistry staining of A431 cells with GAPDH monoclonal antibody, clone RM114 (Cat # MAB12829) (Red) at 1:200 dilution. Nuclear DNA was stained with DAPI (Blue).

- Immunoprecipitation

- Enzyme-linked Immunoabsorbent Assay

- Flow Cytometry

## Gene Info — GAPDH

**Entrez GeneID** [2597](#)

**Protein Accession#** [P04406](#)

Gene Name	GAPDH
Gene Alias	G3PD, GAPD, MGC88685
Gene Description	glyceraldehyde-3-phosphate dehydrogenase
Omim ID	<a href="#">138400</a>
Gene Ontology	<a href="#">Hyperlink</a>
Gene Summary	The product of this gene catalyzes an important energy-yielding step in carbohydrate metabolism, the reversible oxidative phosphorylation of glyceraldehyde-3-phosphate in the presence of inorganic phosphate and nicotinamide adenine dinucleotide (NAD). The enzyme exists as a tetramer of identical chains. Many pseudogenes similar to this locus are present in the human genome. [provided by RefSeq]
Other Designations	OTTHUMP00000174431 OTTHUMP00000174432 aging-associated gene 9 protein glyceraldehyde 3-phosphate dehydrogenase

## Pathway

- [Biosynthesis of alkaloids derived from histidine and purine](#)
- [Biosynthesis of alkaloids derived from ornithine](#)
- [Biosynthesis of alkaloids derived from shikimate pathway](#)
- [Biosynthesis of alkaloids derived from terpenoid and polyketide](#)
- [Biosynthesis of phenylpropanoids](#)
- [Biosynthesis of plant hormones](#)
- [Biosynthesis of terpenoids and steroids](#)
- [Glycolysis / Gluconeogenesis](#)
- [Metabolic pathways](#)

## Disease

- [Alzheimer disease](#)
- [Cardiovascular Diseases](#)
- [Diabetes Complications](#)

- [Metabolic Syndrome X](#)
- [Neoplasms](#)
- [Nerve Degeneration](#)
- [Osteoporosis](#)