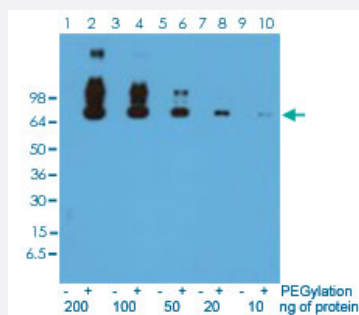


RecomAb™

Polyethylene glycol (methoxy group) monoclonal antibody, clone RM105

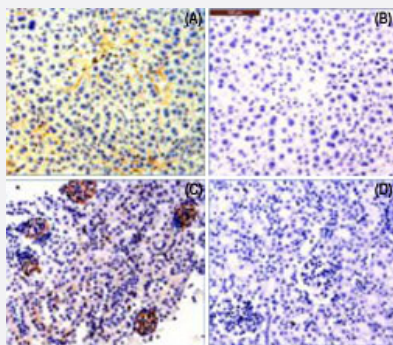
Catalog # MAB12825 Size 100 ug

Applications



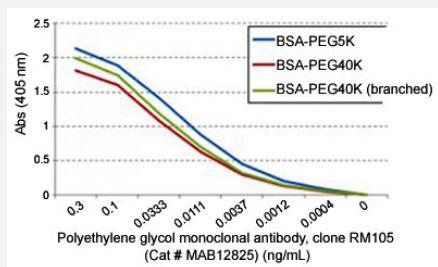
Western Blot

Western blot analysis of BSA and PEGylated BSA using Polyethylene glycol (methoxy group) monoclonal antibody, clone RM105 (Cat # MAB12825) under 0.1 ug/mL working concentration.



Immunohistochemistry (Formalin/PFA-fixed paraffin-embedded sections)

Immunohistochemical staining (Formalin-fixed paraffin-embedded sections) of mouse liver (mouse had been injected with PEG-BSA for 3 hours) (A), mouse liver (mouse had been injected with BSA for 3 hours) (B), mouse kidney (mouse had been injected with PEG-BSA for 3 hours) (C), and mouse kidney (mouse had been injected with BSA for 3 hours) (D) using Polyethylene glycol (methoxy group) monoclonal antibody, clone RM105 (Cat # MAB12825) under 0.5 ug/mL working concentration.



Enzyme-linked Immunoabsorbent Assay

ELISA analysis of different PEGylated BSA using Polyethylene glycol monoclonal antibody, clone RM105 (Cat # MAB12825).

Specification

Product Description	Rabbit recombinant monoclonal antibody raised against polyethylene glycol (methoxy group).
Antibody Species	Rabbit
Immunogen	Original antibody is raised against polyethylene glycol (methoxy group) conjugated with KLH.
Sequence	N/A
Specificity	This antibody reacts to the methoxy group of Polyethylene glycol (PEG). It is specific for methoxypoly (ethylene glycol).
Form	Liquid
Purification	Protein A affinity purification
Isotype	IgG
Recommend Usage	ELISA (0.01-0.3 ug/mL) Flow Cytometry Immunocytochemistry Immunohistochemistry (0.5-2 ug/mL) Immunoprecipitation Western Blot (0.05-1 ug/mL) The optimal working dilution should be determined by the end user.
Storage Buffer	In PBS (50% glycerol, 1% BSA, 0.09% sodium azide)
Storage Instruction	Store at -20°C. Aliquot to avoid repeated freezing and thawing.
Note	This product contains sodium azide: a POISONOUS AND HAZARDOUS SUBSTANCE which should be handled by trained staff only.

Applications

- Western Blot

Western blot analysis of BSA and PEGylated BSA using Polyethylene glycol (methoxy group) monoclonal antibody, clone RM105 (Cat # MAB12825) under 0.1 ug/mL working concentration.

- Immunohistochemistry (Formalin/PFA-fixed paraffin-embedded sections)

Immunohistochemical staining (Formalin-fixed paraffin-embedded sections) of mouse liver (mouse had been injected with PEG-BSA for 3 hours) (A), mouse liver (mouse had been injected with BSA for 3 hours) (B), mouse kidney (mouse had been injected with PEG-BSA for 3 hours) (C), and mouse kidney (mouse had been injected with BSA for 3 hours) (D) using Polyethylene glycol (methoxy group) monoclonal antibody, clone RM105 (Cat # MAB12825) under 0.5 ug/mL working concentration.

- Immunocytochemistry

- Immunoprecipitation

- Enzyme-linked Immunoabsorbent Assay

ELISA analysis of different PEGylated BSA using Polyethylene glycol monoclonal antibody, clone RM105 (Cat # MAB12825).

- Flow Cytometry