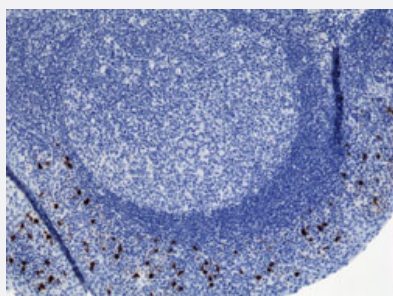


RecomAb™

Human IgA2 monoclonal antibody, clone RM125

Catalog # MAB12815 Size 100 ug

Applications



Immunohistochemistry (Formalin/PFA-fixed paraffin-embedded sections)

Immunohistochemical staining (Formalin-fixed paraffin-embedded sections) of human tonsil tissue with Human IgA2 monoclonal antibody, clone RM125 (Cat # MAB12815) under 1 ug/mL working concentration.

Enzyme-linked Immunoabsorbent Assay

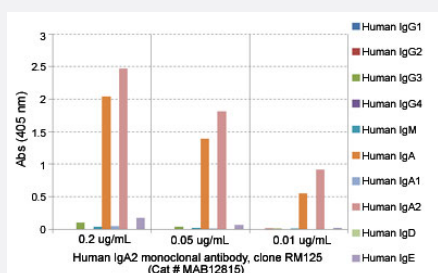
ELISA analysis of Human IgA2 monoclonal antibody, clone RM125 (Cat # MAB12815) at the following concentrations: 0.2 ug/mL, 0.05 ug/mL, 0.01 ug/mL. The plate was coated with 50 ng/well of different immunoglobulins and the result shows this antibody reacts to human IgA2; no cross reactivity human IgG, IgM, IgD, or IgE. An alkaline phosphatase conjugated anti-rabbit IgG as the secondary antibody.

Enzyme-linked Immunoabsorbent Assay

A titer ELISA using Human IgA2 monoclonal antibody, clone RM125 (Cat# MAB12815). The plate was coated with different amounts of human IgA2. A serial dilution of Cat# MAB12815 was used as the primary antibody. An alkaline phosphatase conjugated anti-rabbit IgG as the secondary antibody.

Enzyme-linked Immunoabsorbent Assay

Sandwich ELISA using Human IgA2 monoclonal antibody, clone RM125 (Cat# MAB12815) as the capture antibody (100ng/well), and Human Ig light chain monoclonal antibody, clone RM129 (Biotin) (Cat# MAB12811) as the detection antibody, followed by an alkaline phosphatase conjugated streptavidin.



Enzyme-linked Immunoabsorbent Assay

Sandwich ELISA using Human IgA2 monoclonal antibody, clone RM125 (Cat# MAB12815) as the capture antibody (100ng/well), and Human Ig light chain monoclonal antibody, clone RM129 (Biotin) (Cat# MAB12811) as the detection antibody, followed by an alkaline phosphatase conjugated streptavidin.

Specification

Product Description	Rabbit recombinant monoclonal antibody raised against human IgA2.
Antibody Species	Rabbit
Immunogen	Original antibody is raised against human IgA2.
Sequence	N/A
Reactivity	Human
Specificity	This antibody reacts to human IgA2. No cross reactivity with human IgA1, IgG, IgM, IgD, or IgE.
Form	Liquid
Purification	Protein A affinity purification
Isotype	IgG
Recommend Usage	ELISA (0.05-0.2 ug/mL for detection; 0.05-0.2 ug/well for capture) Flow Cytometry Immunocytochemistry (0.5-2 ug/mL) Immunohistochemistry (0.1-1 ug/mL) The optimal working dilution should be determined by the end user.
Storage Buffer	In PBS (50% glycerol, 1% BSA, 0.09% sodium azide)
Storage Instruction	Store at -20°C. Aliquot to avoid repeated freezing and thawing.
Note	This product contains sodium azide: a POISONOUS AND HAZARDOUS SUBSTANCE which should be handled by trained staff only.

Applications

- Immunohistochemistry (Formalin/PFA-fixed paraffin-embedded sections)

Immunohistochemical staining (Formalin-fixed paraffin-embedded sections) of human tonsil tissue with Human IgA2 monoclonal antibody, clone RM125 (Cat # MAB12815) under 1 ug/mL working concentration.

- Immunocytochemistry

- Enzyme-linked Immunoabsorbent Assay

ELISA analysis of Human IgA2 monoclonal antibody, clone RM125 (Cat # MAB12815) at the following concentrations: 0.2 ug/mL, 0.05 ug/mL, 0.01 ug/mL. The plate was coated with 50 ng/well of different immunoglobulins and the result shows this antibody reacts to human IgA2; no cross reactivity human IgG, IgM, IgD, or IgE. An alkaline phosphatase conjugated anti-rabbit IgG as the secondary antibody.

- Enzyme-linked Immunoabsorbent Assay

A titer ELISA using Human IgA2 monoclonal antibody, clone RM125 (Cat# MAB12815). The plate was coated with different amounts of human IgA2. A serial dilution of Cat# MAB12815 was used as the primary antibody. An alkaline phosphatase conjugated anti-rabbit IgG as the secondary antibody.

- Enzyme-linked Immunoabsorbent Assay

Sandwich ELISA using Human IgA2 monoclonal antibody, clone RM125 (Cat# MAB12815) as the capture antibody (100ng/well), and Human Ig light chain monoclonal antibody, clone RM129 (Biotin) (Cat# MAB12811) as the detection antibody, followed by an alkaline phosphatase conjugated streptavidin.

- Enzyme-linked Immunoabsorbent Assay

Sandwich ELISA using Human IgA2 monoclonal antibody, clone RM125 (Cat# MAB12815) as the capture antibody (100ng/well), and Human Ig light chain monoclonal antibody, clone RM129 (Biotin) (Cat# MAB12811) as the detection antibody, followed by an alkaline phosphatase conjugated streptavidin.

- Flow Cytometry

Gene Info — IGHA2

Entrez GeneID	3494
---------------	----------------------

Protein Accession#	P01877
--------------------	------------------------

Gene Name	IGHA2
-----------	-------

Gene Alias	-
------------	---

Gene Description	immunoglobulin heavy constant alpha 2 (A2m marker)
------------------	--

Omim ID	147000
---------	------------------------

Gene Ontology	Hyperlink
---------------	---------------------------

Other Designations

-