

ITGA6 monoclonal antibody, clone 129CT49.6.5

Catalog # MAB12290

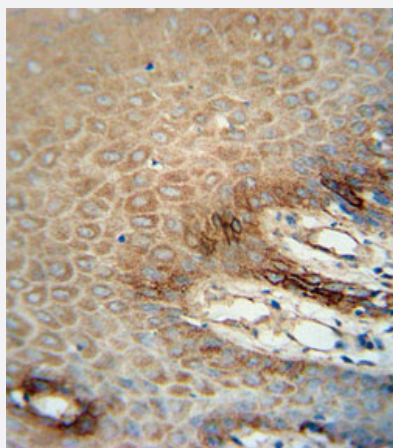
Size 400 uL

Applications



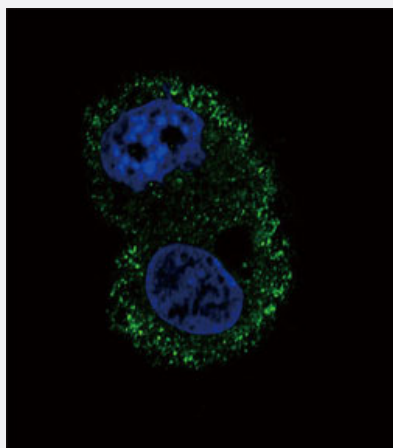
Western Blot (Cell lysate)

Western blot analysis of HepG2 cell line lysates reacted with ITGA6 monoclonal antibody (Cat # MAB12290) at 1:100-1:16000 dilution.



Immunohistochemistry (Formalin/PFA-fixed paraffin-embedded sections)

Immunohistochemical staining of formalin-fixed and paraffin-embedded human skin carcinoma reacted with ITGA6 monoclonal antibody (Cat # MAB12290) at 1:10-1:50 dilution.

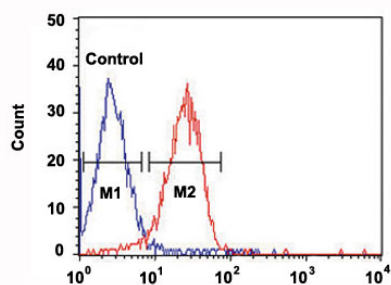


Immunofluorescence

Immunofluorescent staining of HepG2 cell reacted with ITGA6 monoclonal antibody (Cat # MAB12290) at 1:10-1:50 dilution.

Flow Cytometry

Flow cytometric analysis of HepG2 cells (right histogram) and a negative control cell (left histogram) reacted with ITGA6 monoclonal antibody (Cat # MAB12290) at 1:10-1:50 dilution.



Specification

Product Description	Mouse monoclonal antibody raised against human ITGA6.
Immunogen	Recombinant protein corresponding to human ITGA6.
Host	Mouse
Reactivity	Human
Form	Liquid
Purification	Protein G purification
Isotype	IgG1
Recommend Usage	Flow Cytometry (1:10-1:50) Immunohistochemistry (1:10-1:50) Immunofluorescence (1:10-1:50) Western Blot (1:100-1:16000) The optimal working dilution should be determined by the end user.
Storage Buffer	In PBS (0.09% sodium azide)
Storage Instruction	Store at 4°C. For long term storage store at -20°C. Aliquot to avoid repeated freezing and thawing.
Note	This product contains sodium azide: a POISONOUS AND HAZARDOUS SUBSTANCE which should be handled by trained staff only.

Applications

- Western Blot (Cell lysate)

Western blot analysis of HepG2 cell line lysates reacted with ITGA6 monoclonal antibody (Cat # MAB12290) at 1:100-1:16000 dilution.

- Immunohistochemistry (Formalin/PFA-fixed paraffin-embedded sections)

Immunohistochemical staining of formalin-fixed and paraffin-embedded human skin carcinoma reacted with ITGA6 monoclonal antibody (Cat # MAB12290) at 1:10-1:50 dilution.

- Immunofluorescence

Immunofluorescent staining of HepG2 cell reacted with ITGA6 monoclonal antibody (Cat # MAB12290) at 1:10-1:50 dilution.

- Flow Cytometry

Flow cytometric analysis of HepG2 cells (right histogram) and a negative control cell (left histogram) reacted with ITGA6 monoclonal antibody (Cat # MAB12290) at 1:10-1:50 dilution.

Gene Info — ITGA6

Entrez GeneID

[3655](#)

Gene Name

ITGA6

Gene Alias

CD49f, DKFZp686J01244, FLJ18737, ITGA6B, VLA-6

Gene Description

integrin, alpha 6

Omim ID

[147556](#) [226730](#)

Gene Ontology

[Hyperlink](#)

Gene Summary

The ITGA6 protein product is the integrin alpha chain alpha 6. Integrins are integral cell-surface proteins composed of an alpha chain and a beta chain. A given chain may combine with multiple partners resulting in different integrins. For example, alpha 6 may combine with beta 4 in the integrin referred to as TSP180, or with beta 1 in the integrin VLA-6. Integrins are known to participate in cell adhesion as well as cell-surface mediated signalling. Two transcript variants encoding different isoforms have been found for this gene. [provided by RefSeq]

Other Designations

integrin alpha chain, alpha 6|integrin alpha6B

Pathway

- [Arrhythmogenic right ventricular cardiomyopathy \(ARVC\)](#)
- [Cell adhesion molecules \(CAMs\)](#)

- [ECM-receptor interaction](#)
- [Focal adhesion](#)
- [Hematopoietic cell lineage](#)
- [Hypertrophic cardiomyopathy \(HCM\)](#)
- [Pathways in cancer](#)
- [Regulation of actin cytoskeleton](#)
- [Small cell lung cancer](#)

Disease

- [Breast cancer](#)
- [Breast Neoplasms](#)
- [Coronary Artery Disease](#)
- [Disease Susceptibility](#)
- [Genetic Predisposition to Disease](#)
- [Ovarian Neoplasms](#)
- [Prostatic Neoplasms](#)