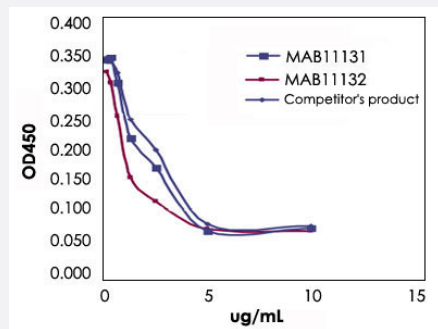


Anti-Rituximab monoclonal antibody, clone 2B11-3

Catalog # MAB11132 Size 100 ug

Applications



Blocking

Anti-Rituximab monoclonal antibody, clone 10C5-3 (Cat # MAB11131) and Anti-Rituximab monoclonal antibody, clone 2B11-3 (Cat # MAB11132) inhibits interaction of Rituximab and its antigen CD20 to the same level as the competitor's product.

Specification

Product Description	Mouse monoclonal antibody raised against F(ab)2 fragment of Rituximab. Target gene is CD20.
Immunogen	F(ab)2 fragment of Rituximab.
Host	Mouse
Specificity	Rituximab. This antibody is able to interfere the binding between Rituximab and CD20 peptide.
Form	Liquid
Preparation Method	Purified IgG was prepared by affinity chromatography on Protein G from cell culture supernatant.
Purification	Protein G purification
Isotype	IgG1, kappa
Recommend Usage	ELISA (2 ug/mL for coating) The optimal working dilution should be determined by the end user.
Storage Buffer	In TBS, pH 8.0 (0.09% sodium azide).

Storage Instruction

Store at 4°C for at least 12 months. For long term storage store at -80°C.
Aliquot to avoid repeated freezing and thawing.

Note

This product contains sodium azide: a POISONOUS AND HAZARDOUS SUBSTANCE which should be handled by trained staff only.

Applications

- Enzyme-linked Immunoabsorbent Assay
- Blocking

Anti-Rituximab monoclonal antibody, clone 10C5-3 (Cat # MAB11131) and Anti-Rituximab monoclonal antibody, clone 2B11-3 (Cat # MAB11132) inhibits interaction of Rituximab and its antigen CD20 to the same level as the competitor's product.

Gene Info — MS4A1

Entrez GeneID[931](#)**Gene Name**

MS4A1

Gene Alias

B1, Bp35, CD20, LEU-16, MGC3969, MS4A2, S7

Gene Description

membrane-spanning 4-domains, subfamily A, member 1

Omim ID[112210](#)**Gene Ontology**[Hyperlink](#)**Gene Summary**

This gene encodes a member of the membrane-spanning 4A gene family. Members of this nascent protein family are characterized by common structural features and similar intron/exon splice boundaries and display unique expression patterns among hematopoietic cells and nonlymphoid tissues. This gene encodes a B-lymphocyte surface molecule which plays a role in the development and differentiation of B-cells into plasma cells. This family member is localized to 11q12, among a cluster of family members. Alternative splicing of this gene results in two transcript variants which encode the same protein. [provided by RefSeq]

Other Designations

B-lymphocyte cell-surface antigen B1|CD20 antigen|CD20 receptor

Pathway

- [Hematopoietic cell lineage](#)

Disease

- [Breast cancer](#)
- [Breast Neoplasms](#)
- [Genetic Predisposition to Disease](#)
- [Lymphoma](#)
- [Neoplasm Recurrence](#)
- [Ovarian cancer](#)