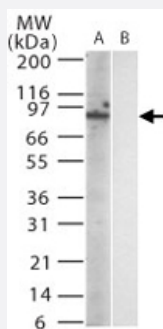


Tlr12 monoclonal antibody, clone 15F1215

Catalog # MAB0104 Size 200 uL

Applications



Western Blot (Transfected lysate)

Western blot analysis of mouse Tlr12 in (A) transfected and (B) untransfected cell lysate using Tlr12 monoclonal antibody, clone 15F1215 (Cat # MAB0104) at 1:1000.

Specification

Product Description	Mouse monoclonal antibody raised against synthetic peptide of Tlr12.
Immunogen	A synthetic peptide corresponding to amino acids 791-806 of mouse Tlr12.
Sequence	LGLRLCLPERDFEPGK
Host	Mouse
Reactivity	Mouse
Form	Liquid
Isotype	IgM
Recommend Usage	The optimal working dilution should be determined by the end user.
Storage Buffer	In PBS (0.05% BSA, 0.05% sodium azide)
Storage Instruction	Store at 4°C. For long term storage store at -20°C. Aliquot to avoid repeated freezing and thawing.
Note	This product contains sodium azide: a POISONOUS AND HAZARDOUS SUBSTANCE which should be handled by trained staff only.

Applications

- Western Blot (Transfected lysate)

Western blot analysis of mouse Tlr12 in (A) transfected and (B) untransfected cell lysate using Tlr12 monoclonal antibody, clone 15F1215 (Cat # MAB0104) at 1:1000.

Gene Info — Tlr12

Entrez GeneID	384059
---------------	------------------------

Protein Accession#	NP_991392.1
--------------------	-----------------------------

Gene Name	Tlr12
-----------	-------

Gene Alias	Gm1365
------------	--------

Gene Description	toll-like receptor 12
------------------	-----------------------

Gene Ontology	Hyperlink
---------------	---------------------------

Other Designations	OTTMUSP00000009841
--------------------	--------------------