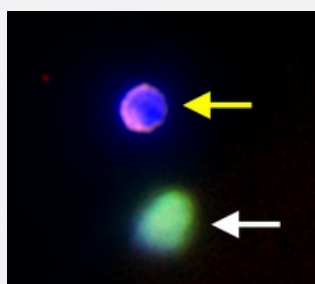


CytoQuest™ Glioblastoma Multiforme CSV CSV CD45 EGFRvIII Antibody Kit

Catalog # KA4906

Size 1 Kit

Applications



Immunofluorescence (Circulating Glioblastoma Multiforme Cell)

Representative images of CTC (white arrow) and WBC (yellow arrow) from GBM patient. CTC was detected by using immunofluorescence staining for CSV (FITC, green), EGFRvIII (APC, red), CD45 (PE, orange) and Nucleus (Hoechst, blue).

Specification

Product Description

CytoQuest™ Glioblastoma Multiforme CSV CSV CD45 EGFRvIII Antibody Kit contains antibodies and reagents for immobilization and immunostaining of circulating glioblastoma multiforme cells.

Instrument Requirement

[CytoQuest™ CR](#)

Chip Requirement

[CytoChipNano CR](#)

Supplied Product

Kit content:

1. Anti-CSV capturing antibody (Biotin):

Biotin conjugated Anti-CSV antibody for circulating glioblastoma multiforme cell capturing.

2. Anti-CSV detecting antibody (FITC):

FITC conjugated Anti-CSV antibody for circulating glioblastoma multiforme cell detection.

3. Anti-CD45 detecting antibody (PE):

PE conjugated Anti-CD45 antibody for circulating glioblastoma multiforme cell detection.

4. Anti-EGFRvIII detecting antibody (APC):

APC conjugated Anti-EGFRvIII detecting antibody for circulating glioblastoma multiforme cell detection.

5. 50X Antibody Dilution Buffer (50X ADB).

*Reagents are sufficient for 20 assays using recommended protocol.

Regulatory Status

For research use only (RUO)

Storage Instruction

Store Anti-CSV capturing antibody (Biotin), Anti-CSV detecting antibody (FITC), Anti-CD45 detecting antibody (PE) and Anti-EGFRvIII detecting antibody (APC) at 4°C.

Store 50X Antibody Dilution Buffer (50X ADB) at -20°C.

Aliquot to avoid repeated freezing and thawing.

Note

Cell-Surface Vimentin (CSV) detecting antibody is best used before cell fixation and permeabilization. If fixation is required, please use Abnova's [Special Fixative](#).

Cell-Surface Vimentin (CSV) antibody is a pending MD Anderson patent which has been exclusively licensed to Abnova Corporation.

Applications

- Immunofluorescence (Circulating Glioblastoma Multiforme Cell)

Representative images of CTC (white arrow) and WBC (yellow arrow) from GBM patient. CTC was detected by using immunofluorescence staining for CSV (FITC, green), EGFRvIII (APC, red), CD45 (PE, orange) and Nucleus (Hoechst, blue).