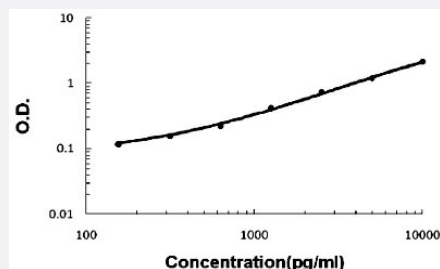


Laminin (Mouse) ELISA Kit

Catalog # KA0380 Size 1 Kit

Applications



The standard curve is for the purpose of illustration only and should not be used to calculate unknowns. A standard curve should be generated each time the assay is performed.

Specification

Product Description	Laminin (Mouse) ELISA Kit is a sandwich enzyme immunoassay for the quantitative measurement of mouse laminin.
Suitable Sample	Cell lysates, Cell Culture Supernatant, Plasma (EDTA, Heparin), Serum
Sample Volume	100 uL
Label	HRP-conjugated
Detection Method	Colorimetric
Assay Type	Quantitative
Calibration Range	156 to 10000 pg/mL
Reactivity	Mouse
Regulation Status	For research use only (RUO)
Storage Instruction	Store at 4°C for 6 months, at -20°C for 12 months. Avoid multiple freeze-thaw cycles.

Applications

- Quantification

Publication Reference

- [Molecular cloning of the cDNA encoding human laminin A chain.](#)

Haaparanta T, Uitto J, Ruoslahti E, Engvall E.

Matrix 1991 Jun; 11(3):151.

- [Human laminin A chain \(LAMA\) gene: chromosomal mapping to locus 18p11.3.](#)

Nagayoshi T, Mattei MG, Passage E, Knowlton R, Chu ML, Uitto J.

Genomics 1989 Nov; 5(4):932.

- [Sequence of the cDNA encoding the laminin B1 chain reveals a multidomain protein containing cysteine-rich repeats.](#)

Sasaki M, Kato S, Kohno K, Martin GR, Yamada Y.

PNAS 1987 Feb; 84(4):935.