

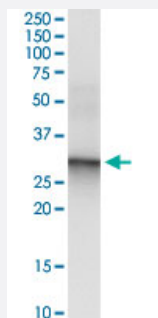
MaxPab®

CACNG6 MaxPab rabbit polyclonal antibody (D01)

Catalog # H00059285-D01

Size 100 uL

Applications



Immunoprecipitation

Immunoprecipitation of CACNG6 transfected lysate using anti-CACNG6 MaxPab rabbit polyclonal antibody and Protein A Magnetic Bead, and immunoblotted with CACNG6 purified MaxPab mouse polyclonal antibody (B01P) ([H00059285-B01P](#)).

Specification

Product Description	Rabbit polyclonal antibody raised against a full-length human CACNG6 protein.
Immunogen	CACNG6 (NP_665813.1, 1 a.a. ~ 260 a.a) full-length human protein.
Sequence	MMWSNFFLQEENRRRGAAGRRRAHGQGRSGLTPEREGKVKLALLLAAVGATLAVLSVGTEFWV ELNTYKANGSAVCEAAHLGLWKACTKRLWQADVPVDRDTCGPAELPGEANCTYFKFFTGENA RIFQRTTKKEVNLA AVIAVLGLAVMALGCLCIIMVLSKGAEFLLRVGAVCFGLSGLLLVSLEVFR HSVRALLQRVSPPEPPAPRLTYEYSWSLGCVGAGLILLGAGCFLLLTLPSPWPWGS LCPKRGH RAT
Host	Rabbit
Reactivity	Human
Interspecies Antigen Sequence	Mouse (86); Rat (87)
Quality Control Testing	Antibody reactive against mammalian transfected lysate.
Storage Buffer	No additive
Storage Instruction	Store at -20°C or lower. Aliquot to avoid repeated freezing and thawing.

Applications

- Immunoprecipitation

Immunoprecipitation of CACNG6 transfected lysate using anti-CACNG6 MaxPab rabbit polyclonal antibody and Protein A Magnetic Bead, and immunoblotted with CACNG6 purified MaxPab mouse polyclonal antibody (B01P) ([H00059285-B01P](#)).

[Protocol Download](#)

Gene Info — CACNG6

Entrez GeneID	59285
GeneBank Accession#	NM_145814
Protein Accession#	NP_665813.1
Gene Name	CACNG6
Gene Alias	-
Gene Description	calcium channel, voltage-dependent, gamma subunit 6
Omim ID	606898
Gene Ontology	Hyperlink
Gene Summary	L-type calcium channels are composed of five subunits. The protein encoded by this gene represents one of these subunits, gamma, and is one of several gamma subunit proteins. It is an integral membrane protein that is thought to stabilize the calcium channel in an inactive (closed) state. This gene is a member of the neuronal calcium channel gamma subunit gene subfamily of the PMP-22/EMP/MP20 family and is located in a cluster with two similar gamma subunit-encoding genes. Three transcript variants encoding different isoforms have been found for this gene. [provided by RefSeq]
Other Designations	neuronal voltage-gated calcium channel gamma-6 subunit voltage-dependent calcium channel gamma-6 subunit

Pathway

- [Arrhythmogenic right ventricular cardiomyopathy \(ARVC\)](#)
- [Cardiac muscle contraction](#)
- [Hypertrophic cardiomyopathy \(HCM\)](#)

- [MAPK signaling pathway](#)

Disease

- [Asthma](#)