

DNAxPAb

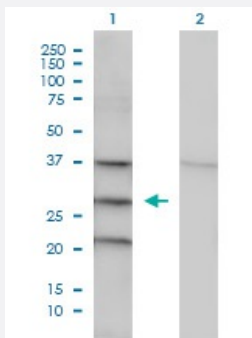
Hard-to-Find
Antibody

CECR1 DNAxPab

Catalog # H00051816-W01P

Size 100 ug

Applications



Western Blot (Transfected lysate)

Western Blot analysis of CECR1 expression in transfected 293T cell line by CECR1 DNAxPab polyclonal antibody.

Lane 1: CECR1 transfected lysate(30.7 KDa).

Lane 2: Non-transfected lysate.

Specification

Product Description	Rabbit polyclonal antibody raised against a full-length human CECR1 DNA using DNAx™ Immune technology.
Technology	DNAx™ Immune
Immunogen	CECR1 (NP_803124.1, 1 a.a. ~ 270 a.a) full-length human DNA
Sequence	MDSLEWNWALVYELSGEHHDEEWSVKTYQEVAQKFVETHPEFIGIKIYSDHRSKDVAVIAESIRM AMGLRIKFPTVVAGFDLVGHEDTGHSLHDYKEALMIPAKDGVKLPYFFHAGETDWQGTSIDRNILD ALMLNTRIGHGFALSKHPAVRTYSWKKDPIEVCPIQNQVLKLVSDLRNHPVATLMATGHPMVISS DDPAMFGAKGLSYDFYEVFMGIGGMKADLRTLKQLAMNSIKYSTLLESEKNTFMIEWKKRWDFI ADVATK
Host	Rabbit
Reactivity	Human
Purification	Protein A
Quality Control Testing	Antibody reactive against mammalian transfected lysate.
Storage Buffer	In 1x PBS, pH 7.4

Storage Instruction

Store at -20°C or lower. Aliquot to avoid repeated freezing and thawing.

Applications

- Western Blot (Transfected lysate)

Western Blot analysis of CECR1 expression in transfected 293T cell line by CECR1 DNAxPab polyclonal antibody.

Lane 1: CECR1 transfected lysate(30.7 KDa).

Lane 2: Non-transfected lysate.

[Protocol Download](#)

- Immunofluorescence (Transfected cell)
- Flow Cytometry (Transfected cell)

Gene Info — CECR1

Entrez GeneID [51816](#)

GeneBank Accession# [NM_177405.1](#)

Protein Accession# [NP_803124.1](#)

Gene Name CECR1

Gene Alias ADGF, IDGFL

Gene Description cat eye syndrome chromosome region, candidate 1

Omim ID [607575](#)

Gene Ontology [Hyperlink](#)

Gene Summary This gene encodes a member of a subfamily of the adenosine deaminase protein family. The encoded protein may act as a growth factor and have adenosine deaminase activity. It may be responsible for some of the phenotypic features associated with cat eye syndrome. Two transcript variants encoding distinct isoforms have been identified for this gene. [provided by RefSeq]

Other Designations OTTHUMP00000028854|OTTHUMP00000196142|cat eye syndrome critical region protein 1

Disease

- [Tobacco Use Disorder](#)