

DNAXPab

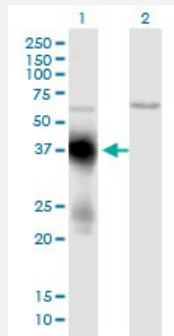
Hard-to-Find
Antibody

PANX1 DNAXPab

Catalog # H00024145-W01P

Size 100 ug

Applications



Western Blot (Transfected lysate)

Western Blot analysis of PANX1 expression in transfected 293T cell line by PANX1 DNAXPab polyclonal antibody.

Lane 1: PANX1 transfected lysate(36.41 KDa).

Lane 2: Non-transfected lysate.

Specification

Product Description	Rabbit polyclonal antibody raised against a partial-length human PANX1 DNA using DNAX™ Immune technology.
Technology	DNAX™ Immune
Immunogen	PANX1 (AAH16931.1, 288 a.a. ~ 426 a.a) partial-length human DNA
Sequence	APVVVYTLFVPFRQKTDVLKVYEILPTFDVLHFKSEGYNDLSLYNLFLEENISEVKSYSKCLKVLENIK SSGQGIDPMLLLTNLGMKMDVVDGKTPMSAEMREEQGNQTAELQGMNIDSETKANNGEKNARQ RLLDSSC
Host	Rabbit
Reactivity	Human
Purification	Protein A
Quality Control Testing	Antibody reactive against mammalian transfected lysate.
Storage Buffer	In 1x PBS, pH 7.4
Storage Instruction	Store at -20°C or lower. Aliquot to avoid repeated freezing and thawing.

Applications

- Western Blot (Transfected lysate)

Western Blot analysis of PANX1 expression in transfected 293T cell line by PANX1 DNAPab polyclonal antibody.

Lane 1: PANX1 transfected lysate(36.41 KDa).

Lane 2: Non-transfected lysate.

[Protocol Download](#)

- Immunofluorescence (Transfected cell)

- Flow Cytometry (Transfected cell)

Gene Info — PANX1

Entrez GeneID [24145](#)

GeneBank Accession# [BC016931.1](#)

Protein Accession# [AAH16931.1](#)

Gene Name PANX1

Gene Alias MGC21309, MRS1, PX1, UNQ2529

Gene Description pannexin 1

Omim ID [608420](#)

Gene Ontology [Hyperlink](#)

Gene Summary The protein encoded by this gene belongs to the innexin family. Innexin family members are the structural components of gap junctions. This protein and pannexin 2 are abundantly expressed in central nerve system (CNS) and are coexpressed in various neuronal populations. Studies in Xenopus oocytes suggest that this protein alone and in combination with pannexin 2 may form cell type-specific gap junctions with distinct properties. [provided by RefSeq]

Other Designations innexin

Disease

- [Genetic Predisposition to Disease](#)

- [Ovarian Neoplasms](#)