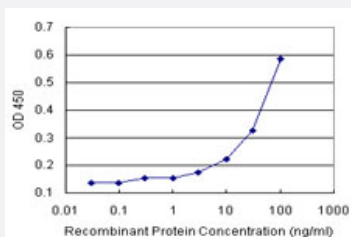


# GLMN (Human) Matched Antibody Pair

Catalog # H00011146-AP11      Size 1 Set

## Applications



Sandwich ELISA detection sensitivity ranging from 10 ng/ml to 100 ng/ml.

## Specification

<b>Product Description</b>	This antibody pair set comes with a matched antibody pair to detect and quantify the protein level of human GLMN.
<b>Reactivity</b>	Human
<b>Interspecies Antigen Sequence</b>	Mouse (85); Rat (83)
<b>Quality Control Testing</b>	Standard curve using recombinant protein ( H00011146-P01 ) as an analyte. Sandwich ELISA detection sensitivity ranging from 10 ng/ml to 100 ng/ml.
<b>Supplied Product</b>	Antibody pair set content: 1. Capture antibody: rabbit MaxPab® affinity purified polyclonal anti-GLMN (100 ug) 2. Detection antibody: mouse monoclonal anti-GLMN, IgG1 Kappa (20 ug) *Reagents are sufficient for at least 1-2 x 96 well plates using recommended protocols.
<b>Storage Instruction</b>	Store reagents of the antibody pair set at -20°C or lower. Please aliquot to avoid repeated freeze thaw cycle. Reagents should be returned to -20°C storage immediately after use.

## Applications

- ELISA Pair (Recombinant protein)

[Protocol Download](#)

## Gene Info — GLMN

Entrez GeneID	<a href="#">11146</a>
---------------	-----------------------

Gene Name	GLMN
-----------	------

Gene Alias	FAP, FAP48, FAP68, FKBPAP, GLML, GVM, VMGLOM
------------	--

Gene Description	glomulin, FKBP associated protein
------------------	-----------------------------------

Omim ID	<a href="#">138000 601749</a>
---------	-------------------------------

Gene Ontology	<a href="#">Hyperlink</a>
---------------	---------------------------

Gene Summary	This gene encodes a phosphorylated protein that is a member of a Skp1-Cullin-F-box-like complex. The protein is essential for normal development of the vasculature and mutations in this gene have been associated with glomuvenous malformations, also called glomangiomas. Alternatively spliced variants that encode different protein isoforms have been described but the full-length nature of only one has been determined. [provided by RefSeq]
--------------	--

Other Designations	FK506-binding protein-associated protein OTTHUMP00000011939 glomulin venous malformation with glomus cells
--------------------	--