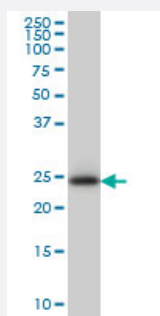


C21orf33 monoclonal antibody (M01), clone 1F5

Catalog # H00008209-M01

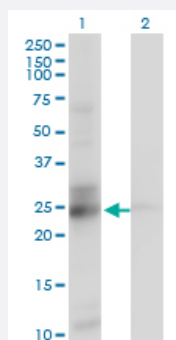
Size 100 ug

Applications



Western Blot (Cell lysate)

C21orf33 monoclonal antibody (M01), clone 1F5 Western Blot analysis of C21orf33 expression in HeLa (Cat # L013V1).

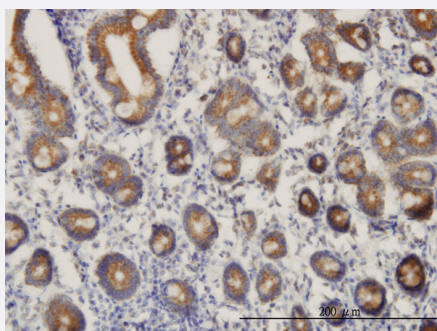


Western Blot (Transfected lysate)

Western Blot analysis of C21orf33 expression in transfected 293T cell line by C21orf33 monoclonal antibody (M01), clone 1F5.

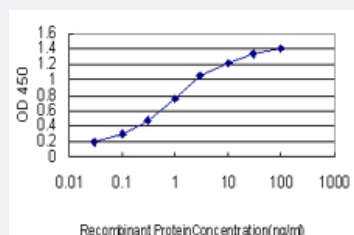
Lane 1: C21orf33 transfected lysate(28.1 KDa).

Lane 2: Non-transfected lysate.



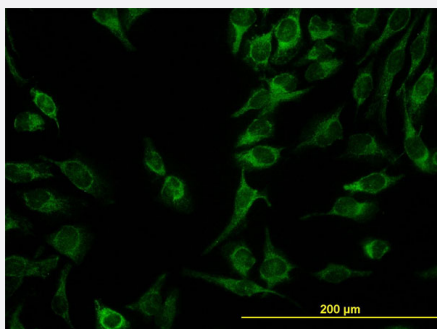
Immunohistochemistry (Formalin/PFA-fixed paraffin-embedded sections)

Immunoperoxidase of monoclonal antibody to C21orf33 on formalin-fixed paraffin-embedded human small Intestine. [antibody concentration 3 ug/ml]



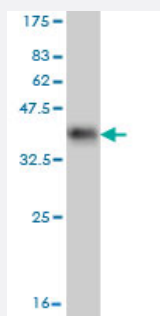
Sandwich ELISA (Recombinant protein)

Detection limit for recombinant GST tagged C21orf33 is approximately 0.03ng/ml as a capture antibody.



Immunofluorescence

Immunofluorescence of monoclonal antibody to C21orf33 on HeLa cell.
[antibody concentration 10 ug/ml]



Western Blot detection against Immunogen (34.65 KDa) .

Specification

Product Description	Mouse monoclonal antibody raised against a partial recombinant C21orf33.
Immunogen	C21orf33 (NP_004640, 188 a.a. ~ 268 a.a) partial recombinant protein with GST tag. MW of the GST tag alone is 26 KDa.
Sequence	RGVEVTVGHEQEEGGKWPYAGTAEAIKALGAKHCVKEVVEAHVDQKNKVVTTPAFMCETALHYI HDGIGAMVRKVLELTGK
Host	Mouse
Reactivity	Human
Interspecies Antigen Sequence	Mouse (93); Rat (91)
Isotype	IgG1 Kappa
Quality Control Testing	Antibody Reactive Against Recombinant Protein. Western Blot detection against Immunogen (34.65 KDa) .
Storage Buffer	In 1x PBS, pH 7.4
Storage Instruction	Store at -20°C or lower. Aliquot to avoid repeated freezing and thawing.

Applications

- Western Blot (Cell lysate)

C21orf33 monoclonal antibody (M01), clone 1F5 Western Blot analysis of C21orf33 expression in HeLa (Cat # L013V1).

[Protocol Download](#)

- Western Blot (Transfected lysate)

Western Blot analysis of C21orf33 expression in transfected 293T cell line by C21orf33 monoclonal antibody (M01), clone 1F5.

Lane 1: C21orf33 transfected lysate(28.1 KDa).

Lane 2: Non-transfected lysate.

[Protocol Download](#)

- Western Blot (Recombinant protein)

[Protocol Download](#)

- Immunohistochemistry (Formalin/PFA-fixed paraffin-embedded sections)

Immunoperoxidase of monoclonal antibody to C21orf33 on formalin-fixed paraffin-embedded human small Intestine. [antibody concentration 3 ug/ml]

[Protocol Download](#)

- Sandwich ELISA (Recombinant protein)

Detection limit for recombinant GST tagged C21orf33 is approximately 0.03ng/ml as a capture antibody.

[Protocol Download](#)

- ELISA

- Immunofluorescence

Immunofluorescence of monoclonal antibody to C21orf33 on HeLa cell. [antibody concentration 10 ug/ml]

Gene Info — C21orf33

Entrez GeneID [8209](#)

GeneBank Accession# [NM_004649](#)

Protein Accession# [NP_004640](#)

Gene Name	C21orf33
Gene Alias	D21S2048E, ES1, GT335, HES1, KNP-I, KNPH, KNPI
Gene Description	chromosome 21 open reading frame 33
Omim ID	601659
Gene Ontology	Hyperlink
Gene Summary	homolog to E.coli and zebrafish ES1 protein
Other Designations	Keio novel protein l es1 protein human HES1 protein, homolog to E.coli and zebrafish ES1 protei n