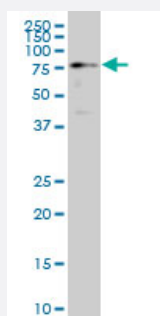


# HCLS1 monoclonal antibody (M02), clone 1A8

Catalog # H00003059-M02

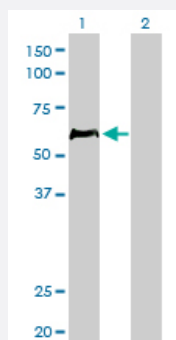
Size 100 ug

## Applications



### Western Blot (Cell lysate)

HCLS1 monoclonal antibody (M02), clone 1A8 Western Blot analysis of HCLS1 expression in K-562 ( Cat # L009V1 ).

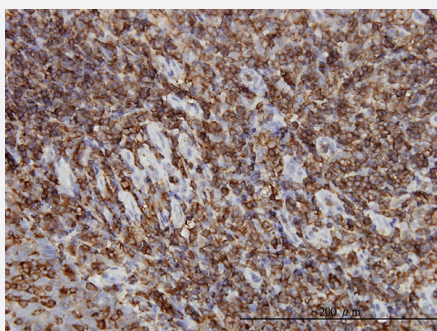


### Western Blot (Transfected lysate)

Western Blot analysis of HCLS1 expression in transfected 293T cell line by HCLS1 monoclonal antibody (M02), clone 1A8.

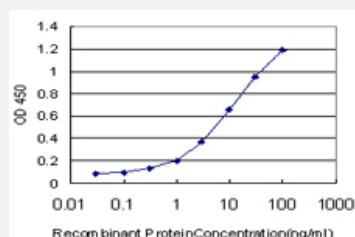
Lane 1: HCLS1 transfected lysate(54 KDa).

Lane 2: Non-transfected lysate.



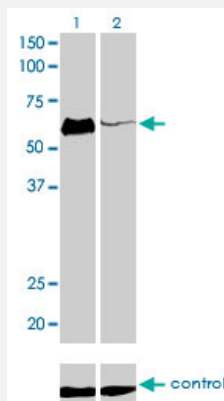
### Immunohistochemistry (Formalin/PFA-fixed paraffin-embedded sections)

Immunoperoxidase of monoclonal antibody to HCLS1 on formalin-fixed paraffin-embedded human tonsil. [antibody concentration 3 ug/ml]



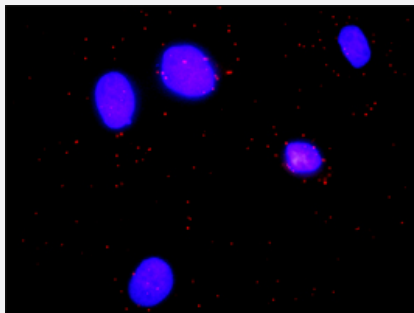
### Sandwich ELISA (Recombinant protein)

Detection limit for recombinant GST tagged HCLS1 is approximately 0.1ng/ml as a capture antibody.



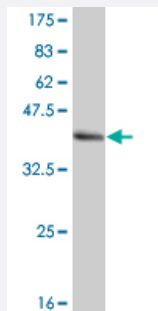
### RNAi Knockdown (Antibody validated)

Western blot analysis of HCLS1 over-expressed 293 cell line, cotransfected with HCLS1 Validated Chimera RNAi ( Cat # H00003059-R01V ) (Lane 2) or non-transfected control (Lane 1). Blot probed with HCLS1 monoclonal antibody (M02), clone 1A8 (Cat # H00003059-M02 ). GAPDH ( 36.1 kDa ) used as specificity and loading control.



### In situ Proximity Ligation Assay (Cell)

Proximity Ligation Analysis of protein-protein interactions between CASP3 and HCLS1. HeLa cells were stained with anti-CASP3 rabbit purified polyclonal 1:1200 and anti-HCLS1 mouse monoclonal antibody 1:50. Each red dot represents the detection of protein-protein interaction complex, and nuclei were counterstained with DAPI (blue).



Western Blot detection against Immunogen (35.64 KDa) .

## Specification

Product Description	Mouse monoclonal antibody raised against a partial recombinant HCLS1.
Immunogen	HCLS1 (AAH16758, 266 a.a. ~ 355 a.a) partial recombinant protein with GST tag. MW of the GST tag alone is 26 KDa.
Sequence	QERKAVTKRSPEAPQPVIAMEEPAVPAPLPKKISSEAWPPVGTPPSSESEPVRTSREHPVPLLPI RQTLPEDNEEPPALPPRTLEGLQVE
Host	Mouse
Reactivity	Human
Isotype	IgG1 Kappa

**Quality Control Testing**

Antibody Reactive Against Recombinant Protein.  
Western Blot detection against Immunogen (35.64 KDa) .

**Storage Buffer**

In 1x PBS, pH 7.4

**Storage Instruction**

Store at -20°C or lower. Aliquot to avoid repeated freezing and thawing.

## Applications

- Western Blot (Cell lysate)

HCLS1 monoclonal antibody (M02), clone 1A8 Western Blot analysis of HCLS1 expression in K-562 ( Cat # L009V1 ).

[Protocol Download](#)

- Western Blot (Transfected lysate)

Western Blot analysis of HCLS1 expression in transfected 293T cell line by HCLS1 monoclonal antibody (M02), clone 1A8.

Lane 1: HCLS1 transfected lysate(54 KDa).

Lane 2: Non-transfected lysate.

[Protocol Download](#)

- Western Blot (Recombinant protein)

[Protocol Download](#)

- Immunohistochemistry (Formalin/PFA-fixed paraffin-embedded sections)

Immunoperoxidase of monoclonal antibody to HCLS1 on formalin-fixed paraffin-embedded human tonsil. [antibody concentration 3 ug/ml]

[Protocol Download](#)

- Sandwich ELISA (Recombinant protein)

Detection limit for recombinant GST tagged HCLS1 is approximately 0.1ng/ml as a capture antibody.

[Protocol Download](#)

- ELISA

- RNAi Knockdown (Antibody validated)

Western blot analysis of HCLS1 over-expressed 293 cell line, cotransfected with HCLS1 Validated Chimera RNAi ( Cat # H00003059-R01V ) (Lane 2) or non-transfected control (Lane 1). Blot probed with HCLS1 monoclonal antibody (M02), clone 1A8 (Cat # H00003059-M02 ). GAPDH ( 36.1 kDa ) used as specificity and loading control.

[Protocol Download](#)

- *In situ* Proximity Ligation Assay (Cell)

Proximity Ligation Analysis of protein-protein interactions between CASP3 and HCLS1. HeLa cells were stained with anti-CASP3 rabbit purified polyclonal 1:1200 and anti-HCLS1 mouse monoclonal antibody 1:50. Each red dot represents the detection of protein-protein interaction complex, and nuclei were counterstained with DAPI (blue).

## Gene Info — HCLS1

Entrez GeneID	<a href="#">3059</a>
GeneBank Accession#	<a href="#">BC016758</a>
Protein Accession#	<a href="#">AAH16758</a>
Gene Name	HCLS1
Gene Alias	CTTNL, HS1
Gene Description	hematopoietic cell-specific Lyn substrate 1
Omim ID	<a href="#">601306</a>
Gene Ontology	<a href="#">Hyperlink</a>
Other Designations	cortactin-like

## Pathway

- [Pathogenic Escherichia coli infection - EHEC](#)
- [Tight junction](#)

## Disease

- [Kidney Failure](#)
- [Lupus Erythematosus](#)