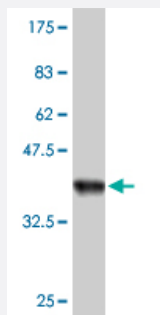


CRYBA1 polyclonal antibody (A01)

Catalog # H00001411-A01

Size 50 uL

Applications



Western Blot detection against Immunogen (37.11 kDa) .

Specification

Product Description	Mouse polyclonal antibody raised against a partial recombinant CRYBA1 .
Immunogen	CRYBA1 (NP_005199, 116 a.a. ~ 215 a.a) partial recombinant protein with GST tag.
Sequence	ICSANHKESKMTIFEKENFIGRQWEISDDYPSLQAMGWFNNEVGSMKIQSGAWVCYQYPGYRGYQ YILECDHHGGDYKHWREWGSHAQTSQIQSIRRIQQ
Host	Mouse
Reactivity	Human
Interspecies Antigen Sequence	Rat (96)
Quality Control Testing	Antibody Reactive Against Recombinant Protein. Western Blot detection against Immunogen (37.11 kDa) .
Storage Buffer	50 % glycerol
Storage Instruction	Store at -20°C or lower. Aliquot to avoid repeated freezing and thawing.

Applications

- Western Blot (Recombinant protein)

[Protocol Download](#)

- ELISA

Gene Info — CRYBA1

Entrez GeneID [1411](#)

GeneBank Accession# [NM_005208](#)

Protein Accession# [NP_005199](#)

Gene Name CRYBA1

Gene Alias CRYB1

Gene Description crystallin, beta A1

Omim ID [123610 600881](#)

Gene Ontology [Hyperlink](#)

Gene Summary

Crystallins are separated into two classes: taxon-specific, or enzyme, and ubiquitous. The latter class constitutes the major proteins of vertebrate eye lens and maintains the transparency and refractive index of the lens. Since lens central fiber cells lose their nuclei during development, these crystallins are made and then retained throughout life, making them extremely stable proteins. Mammalian lens crystallins are divided into alpha, beta, and gamma families; beta and gamma crystallins are also considered as a superfamily. Alpha and beta families are further divided into acidic and basic groups. Seven protein regions exist in crystallins: four homologous motifs, a connecting peptide, and N- and C-terminal extensions. Beta-crystallins, the most heterogeneous, differ by the presence of the C-terminal extension (present in the basic group, none in the acidic group). Beta-crystallins form aggregates of different sizes and are able to self-associate to form dimers or to form heterodimers with other beta-crystallins. This gene, a beta acidic group member, encodes two proteins (crystallin, beta A3 and crystallin, beta A1) from a single mRNA, the latter protein is 17 aa shorter than crystallin, beta A3 and is generated by use of an alternate translation initiation site. Deletion of exons 3 and 4 causes the autosomal dominant disease 'zonular cataract with sutural opacities'. [provided by RefSeq]

Other Designations crystallin, beta A3|eye lens structural protein