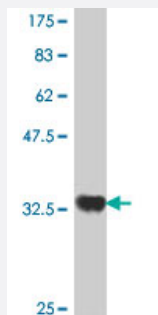


CREBL2 polyclonal antibody (A01)

Catalog # H00001389-A01

Size 50 uL

Applications



Western Blot detection against Immunogen (36.01 KDa) .

Specification

Product Description	Mouse polyclonal antibody raised against a partial recombinant CREBL2.
Immunogen	CREBL2 (NP_001301, 31 a.a. ~ 120 a.a) partial recombinant protein with GST tag.
Sequence	ERSRQSARECRARKKLRYQYLEELVSSRERAICALREELEMYKQWCMAMDQGKIPSEIKALLTGE EQNKSQQNSSRHTKAGKTDANSNSW
Host	Mouse
Reactivity	Human
Quality Control Testing	Antibody Reactive Against Recombinant Protein. Western Blot detection against Immunogen (36.01 KDa) .
Storage Buffer	50 % glycerol
Storage Instruction	Store at -20°C or lower. Aliquot to avoid repeated freezing and thawing.

Applications

- Western Blot (Recombinant protein)

[Protocol Download](#)

- ELISA

Gene Info — CREBL2

Entrez GeneID [1389](#)

GeneBank Accession# [NM_001310](#)

Protein Accession# [NP_001301](#)

Gene Name CREBL2

Gene Alias MGC117311, MGC138362

Gene Description cAMP responsive element binding protein-like 2

Omim ID [603476](#)

Gene Ontology [Hyperlink](#)

Gene Summary cAMP response element (CRE)-binding protein-like-2 (CREBL2) was identified in a search to find genes in a commonly deleted region on chromosome 12p13 flanked by ETV6 and CDKN1B genes, frequently associated with hematopoietic malignancies, as well as breast, non-small-cell lung and ovarian cancers. CREBL2 shares a 41% identity with CRE-binding protein (CREB) over a 48 -base long region which encodes the bZip domain of CREB. The bZip domain consists of about 30 amino acids rich in basic residues involved in DNA binding, followed by a leucine zipper motif involved in protein dimerization. This suggests that CREBL2 encodes a protein with DNA binding capabilities. The occurrence of CREBL2 deletion in malignancy suggests that CREBL2 may act as a tumor suppressor gene. [provided by RefSeq]

Other Designations -

Disease

- [Asthma](#)