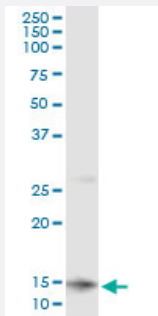


CLPS (Human) IP-WB Antibody Pair

Catalog # H00001208-PW2

Size 1 Set

Applications



Immunoprecipitation of CLPS transfected lysate using mouse monoclonal anti-CLPS and Protein A Magnetic Bead ([U0007](#)), and immunoblotted with rabbit polyclonal anti-CLPS.

Specification

Product Description	This IP-WB antibody pair set comes with one antibody for immunoprecipitation and another to detect the precipitated protein in western blot.
Reactivity	Human
Quality Control Testing	Immunoprecipitation-Western Blot (IP-WB) Immunoprecipitation of CLPS transfected lysate using mouse monoclonal anti-CLPS and Protein A Magnetic Bead (U0007), and immunoblotted with rabbit polyclonal anti-CLPS.
Supplied Product	Antibody pair set content: 1. Antibody pair for IP: mouse monoclonal anti-CLPS (300 ug) 2. Antibody pair for WB: rabbit polyclonal anti-CLPS (50 ul)
Storage Instruction	Store reagents of the antibody pair set at -20°C or lower. Please aliquot to avoid repeated freeze thaw cycle. Reagents should be returned to -20°C storage immediately after use.

Applications

- Immunoprecipitation-Western Blot

[Protocol Download](#)

Gene Info — CLPS

Entrez GeneID	1208
Gene Name	CLPS
Gene Alias	-
Gene Description	colipase, pancreatic
Omim ID	120105
Gene Ontology	Hyperlink
Gene Summary	<p>The protein encoded by this gene is a cofactor needed by pancreatic lipase for efficient dietary lipid hydrolysis. It binds to the C-terminal, non-catalytic domain of lipase, thereby stabilizing an active conformation and considerably increasing the overall hydrophobic binding site. The gene product allows lipase to anchor noncovalently to the surface of lipid micelles, counteracting the destabilizing influence of intestinal bile salts. This cofactor is only expressed in pancreatic acinar cells, suggesting regulation of expression by tissue-specific elements. [provided by RefSeq]</p>
Other Designations	OTTHUMP00000016271 colipase pancreatic colipase preproprotein

Disease

- [Diabetes Mellitus](#)
- [Genetic Predisposition to Disease](#)
- [Obesity](#)