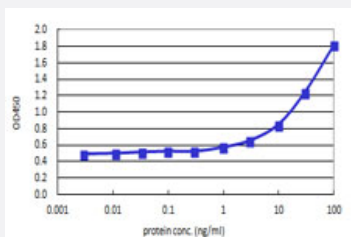


CLPS (Human) Matched Antibody Pair

Catalog # H00001208-AP41

Size 1 Set

Applications



Sandwich ELISA detection sensitivity ranging from 0.3 ng/ml to 100 ng/ml.

Specification

Product Description

This antibody pair set comes with a matched antibody pair to detect and quantify the protein level of human CLPS.

Reactivity

Human

Quality Control Testing

Standard curve using recombinant protein (H00001208-P01) as an analyte.
Sandwich ELISA detection sensitivity ranging from 0.3 ng/ml to 100 ng/ml.

Supplied Product

Antibody pair set content:

1. Capture antibody: mouse monoclonal anti-CLPS, IgG2a Kappa (100 ug)
 2. Detection antibody: biotinylated mouse monoclonal anti-CLPS, IgG2a Kappa (50 ug)
- *Reagents are sufficient for at least 3-5 x 96 well plates using recommended protocols.

Storage Instruction

Store reagents of the antibody pair set at -20°C or lower. Please aliquot to avoid repeated freeze thaw cycle. Reagents should be returned to -20°C storage immediately after use.

Applications

- ELISA Pair (Recombinant protein)

[Protocol Download](#)

Gene Info — CLPS

Entrez GeneID	1208
Gene Name	CLPS
Gene Alias	-
Gene Description	colipase, pancreatic
Omim ID	120105
Gene Ontology	Hyperlink
Gene Summary	<p>The protein encoded by this gene is a cofactor needed by pancreatic lipase for efficient dietary lipid hydrolysis. It binds to the C-terminal, non-catalytic domain of lipase, thereby stabilizing an active conformation and considerably increasing the overall hydrophobic binding site. The gene product allows lipase to anchor noncovalently to the surface of lipid micelles, counteracting the destabilizing influence of intestinal bile salts. This cofactor is only expressed in pancreatic acinar cells, suggesting regulation of expression by tissue-specific elements. [provided by RefSeq]</p>
Other Designations	OTTHUMP00000016271 colipase pancreatic colipase preproprotein

Disease

- [Diabetes Mellitus](#)
- [Genetic Predisposition to Disease](#)
- [Obesity](#)