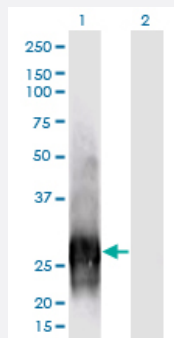


# CALB1 monoclonal antibody (M01), clone 1F6

Catalog # H00000793-M01

Size 100 ug

## Applications

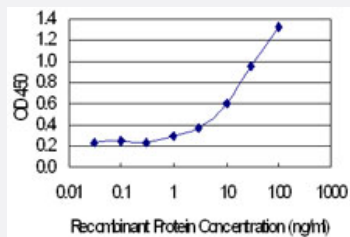


### Western Blot (Transfected lysate)

Western Blot analysis of CALB1 expression in transfected 293T cell line by CALB1 monoclonal antibody (M01), clone 1F6.

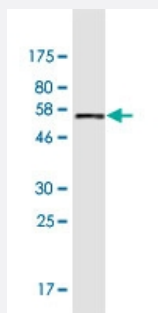
Lane 1: CALB1 transfected lysate (Predicted MW: 30 KDa).

Lane 2: Non-transfected lysate.



### Sandwich ELISA (Recombinant protein)

Detection limit for recombinant GST tagged CALB1 is 0.3 ng/ml as a capture antibody.



Western Blot detection against Immunogen (56.4 KDa) .

## Specification

### Product Description

Mouse monoclonal antibody raised against a full-length recombinant CALB1.

<b>Immunogen</b>	CALB1 (NP_004920.1, 1 a.a. ~ 261 a.a) full-length recombinant protein with GST tag. MW of the GST tag alone is 26 KDa.
<b>Sequence</b>	MAESHLQSSLITASQFFEIWLHFDADGSGYLEGKELQNLIQELQQARKKAGLELSPEMKTTFVDQY GQRDDGKIGMELAHVLPTEENFLLLFRCQQLKSCEEFMKTWRKYDTHSGFIEEELKNFLKDLL EKANKTVDDTKLAEYDLMKLFDSDNNDGKLELTEMARLLPVQENFLKFQGIKMGKEFNKAFF LYDQDGNNGYIDENELDALLKDLCEKNKQDLINNITTYKKNIMALSDGGKLYRTDLALILCAGDN
<b>Host</b>	Mouse
<b>Reactivity</b>	Human
<b>Interspecies Antigen Sequence</b>	Mouse (98); Rat (98)
<b>Isotype</b>	IgG2a Kappa
<b>Quality Control Testing</b>	Antibody Reactive Against Recombinant Protein. Western Blot detection against Immunogen (56.4 KDa) .
<b>Storage Buffer</b>	In 1x PBS, pH 7.4
<b>Storage Instruction</b>	Store at -20°C or lower. Aliquot to avoid repeated freezing and thawing.

## Applications

- Western Blot (Transfected lysate)

Western Blot analysis of CALB1 expression in transfected 293T cell line by CALB1 monoclonal antibody (M01), clone 1F6.

Lane 1: CALB1 transfected lysate (Predicted MW: 30 KDa).

Lane 2: Non-transfected lysate.

[Protocol Download](#)

- Western Blot (Recombinant protein)

[Protocol Download](#)

- Sandwich ELISA (Recombinant protein)

Detection limit for recombinant GST tagged CALB1 is 0.3 ng/ml as a capture antibody.

[Protocol Download](#)

- ELISA

## Gene Info — CALB1

**Entrez GeneID** [793](#)

**GeneBank Accession#** [NM\\_004929.2](#)

**Protein Accession#** [NP\\_004920.1](#)

**Gene Name** CALB1

**Gene Alias** CALB

**Gene Description** calbindin 1, 28kDa

**Omim ID** [114050](#)

**Gene Ontology** [Hyperlink](#)

**Gene Summary** Calbindin is a calcium-binding protein belonging to the troponin C superfamily. It was originally described as a 27-kD protein induced by vitamin D in the duodenum of the chick. In the brain, its synthesis is independent of vitamin-D-derived hormones. Calbindin contains 4 active calcium-binding domains, and 2 modified domains that presumably have lost their calcium-binding capacity. The neurons in brains of patients with Huntington disease are calbindin-depleted. [provided by RefSeq]

**Other Designations** RTVL-H protein|calbindin 1|calbindin 1, (28kD)

## Disease

- [Genetic Predisposition to Disease](#)
- [Parkinson disease](#)