

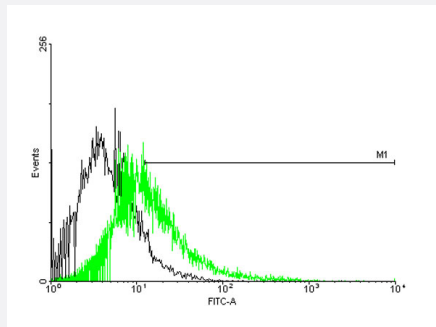
MaxPab®

# CACNG1 purified MaxPab mouse polyclonal antibody (B01P)

Catalog # H00000786-B01P

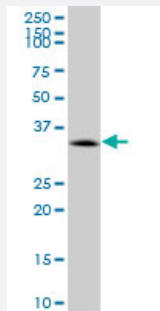
Size 50 ug

## Applications



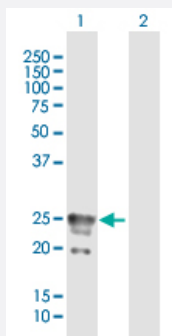
### Flow Cytometry

FACS analysis of negative control 293 cells (Black) and CACNG1 expressing 293 cells (Green) using CACNG1 purified MaxPab mouse polyclonal antibody.



### Western Blot (Cell lysate)

CACNG1 MaxPab polyclonal antibody. Western Blot analysis of CACNG1 expression in K-562.



### Western Blot (Transfected lysate)

Western Blot analysis of CACNG1 expression in transfected 293T cell line ([H00000786-T01](#)) by CACNG1 MaxPab polyclonal antibody.

Lane 1: CACNG1 transfected lysate(24.42 KDa).

Lane 2: Non-transfected lysate.

## Specification

### Product Description

Mouse polyclonal antibody raised against a full-length human CACNG1 protein.

Immunogen	CACNG1 (NP_000718.1, 1 a.a. ~ 222 a.a) full-length human protein.
Sequence	MSQTKMLKVRVTLFCILAGIVLAMTAVVTDHWAVLSPHMEHHNTTCEAAHFGLWRICKRIPMDD SKTCGPITLPGEKNCSYFRHFNPGESSEIFEFTTQKEYSISAAAIAIFSLGFILGSLCVLLSLGKKRDY LLRPASMFYAFAGLCILVSVEVMRQSVKRMIDSEDTVWIEYYYSWSFACACAAFILLFLGGLALLLF SLPRMPRNPWESCMDAEEPH
Host	Mouse
Reactivity	Human
Quality Control Testing	Antibody reactive against mammalian transfected lysate.
Storage Buffer	In 1x PBS, pH 7.4
Storage Instruction	Store at -20°C or lower. Aliquot to avoid repeated freezing and thawing.

## Applications

- Flow Cytometry

FACS analysis of negative control 293 cells (Black) and CACNG1 expressing 293 cells (Green) using CACNG1 purified MaxPab mouse polyclonal antibody.

- Western Blot (Cell lysate)

CACNG1 MaxPab polyclonal antibody. Western Blot analysis of CACNG1 expression in K-562.

[Protocol Download](#)

- Western Blot (Transfected lysate)

Western Blot analysis of CACNG1 expression in transfected 293T cell line ([H00000786-T01](#)) by CACNG1 MaxPab polyclonal antibody.

Lane 1: CACNG1 transfected lysate(24.42 KDa).

Lane 2: Non-transfected lysate.

[Protocol Download](#)

## Gene Info — CACNG1

Entrez GeneID	<a href="#">786</a>
GeneBank Accession#	<a href="#">NM_000727</a>
Protein Accession#	<a href="#">NP_000718.1</a>

Gene Name	CACNG1
Gene Alias	CACNLG
Gene Description	calcium channel, voltage-dependent, gamma subunit 1
Omim ID	<a href="#">114209</a>
Gene Ontology	<a href="#">Hyperlink</a>
Gene Summary	L-type calcium channels are composed of five subunits. The protein encoded by this gene represents one of these subunits, gamma, and is one of several gamma subunit proteins. This particular gamma subunit is part of skeletal muscle 1,4-dihydropyridine-sensitive calcium channels and is an integral membrane protein that plays a role in excitation-contraction coupling. This gene is a member of the neuronal calcium channel gamma subunit gene subfamily of the PMP-22/EMP/MP20 family and is located in a cluster with two similar gamma subunit-encoding genes. [provided by RefSeq]
Other Designations	L-type calcium channel gamma polypeptide dihydropyridine-sensitive L-type skeletal muscle calcium channel gamma subunit neuronal dihydropyridine-sensitive calcium channel gamma subunit voltage-dependent calcium channel gamma-1 subunit

## Publication Reference

- [Three-dimensional structure of the {alpha}1-beta complex in the skeletal muscle dihydropyridine receptor by single-particle electron microscopy.](#)

Murata K, Nishimura S, Kuniyasu A, Nakayama H.

Journal of Electron Microscopy 2009 Dec; 59(3):215.

Application: WB, Rabbit, Rabbit skeletal muscle

## Pathway

- [Arrhythmogenic right ventricular cardiomyopathy \(ARVC\)](#)
- [Cardiac muscle contraction](#)
- [Hypertrophic cardiomyopathy \(HCM\)](#)
- [MAPK signaling pathway](#)

## Disease

- [Disease Progression](#)

- [Disease Susceptibility](#)
- [HIV Infections](#)