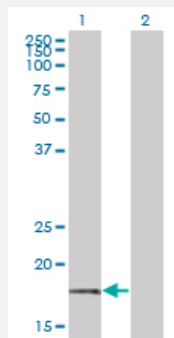


BTF3 monoclonal antibody (M01), clone 3C4-2E11

Catalog # H00000689-M01

Size 100 ug

Applications

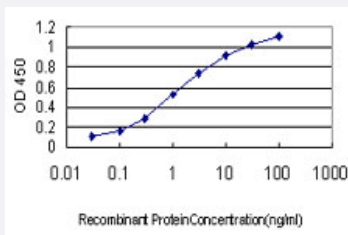


Western Blot (Transfected lysate)

Western Blot analysis of BTF3 expression in transfected 293T cell line by BTF3 monoclonal antibody (M01), clone 3C4-2E11.

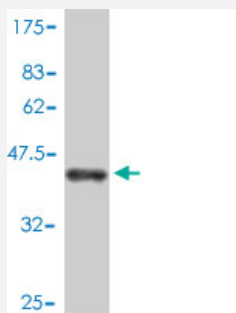
Lane 1: BTF3 transfected lysate(17.7 KDa).

Lane 2: Non-transfected lysate.



Sandwich ELISA (Recombinant protein)

Detection limit for recombinant GST tagged BTF3 is approximately 0.03ng/ml as a capture antibody.



Western Blot detection against Immunogen (43.56 KDa) .

Specification

Product Description

Mouse monoclonal antibody raised against a full length recombinant BTF3.

Immunogen	BTF3 (AAH08062, 1 a.a. ~ 162 a.a) full-length recombinant protein with GST tag. MW of the GST tag alone is 26 KDa.
Sequence	MKETIMNQEKLAKLQAQVRIGGKGTARRKKKVVHRTATADDDKKLQFSLKKLGVNNISGIEEVNMFT NQGTVIHFNNPKVQASLAANTFTITGHAETKQLTEMLPSILNQLGADSLTSLRRLAEALPKQSVDGK APLATGEDDDDEVPDLVENFDEASKNEAN
Host	Mouse
Reactivity	Human
Isotype	IgG1 kappa
Quality Control Testing	Antibody Reactive Against Recombinant Protein. Western Blot detection against Immunogen (43.56 KDa) .
Storage Buffer	In 1x PBS, pH 7.4
Storage Instruction	Store at -20°C or lower. Aliquot to avoid repeated freezing and thawing.

Applications

- Western Blot (Transfected lysate)

Western Blot analysis of BTF3 expression in transfected 293T cell line by BTF3 monoclonal antibody (M01), clone 3C4-2E11.

Lane 1: BTF3 transfected lysate(17.7 KDa).

Lane 2: Non-transfected lysate.

[Protocol Download](#)

- Western Blot (Recombinant protein)

[Protocol Download](#)

- Sandwich ELISA (Recombinant protein)

Detection limit for recombinant GST tagged BTF3 is approximately 0.03ng/ml as a capture antibody.

[Protocol Download](#)

- ELISA

Gene Info — BTF3

Entrez GeneID

[689](#)

GeneBank Accession#	BC008062
Protein Accession#	AAH08062
Gene Name	BTF3
Gene Alias	BETA-NAC, BTF3a, BTF3b, NACB
Gene Description	basic transcription factor 3
Omim ID	602542
Gene Ontology	Hyperlink
Gene Summary	This gene encodes the basic transcription factor 3. This protein forms a stable complex with RNA polymerase IIB and is required for transcriptional initiation. Alternative splicing results in multiple transcript variants encoding different isoforms. This gene has multiple pseudogenes. [provided by RefSeq]
Other Designations	OTTHUMP00000128197 RNA polymerase B transcription factor 3 nascent-polypeptide-associated complex beta polypeptide