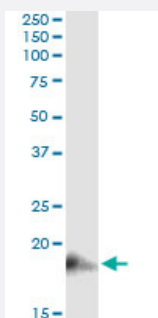


# BST2 (Human) IP-WB Antibody Pair

Catalog # H00000684-PW3

Size 1 Set

## Applications



Immunoprecipitation of BST2 transfected lysate using mouse monoclonal anti-BST2 and Protein A Magnetic Bead ([U0007](#)), and immunoblotted with rabbit polyclonal anti-BST2.

## Specification

<b>Product Description</b>	This IP-WB antibody pair set comes with one antibody for immunoprecipitation and another to detect the precipitated protein in western blot.
<b>Reactivity</b>	Human
<b>Quality Control Testing</b>	Immunoprecipitation-Western Blot (IP-WB) Immunoprecipitation of BST2 transfected lysate using mouse monoclonal anti-BST2 and Protein A Magnetic Bead ( <a href="#">U0007</a> ), and immunoblotted with rabbit polyclonal anti-BST2.
<b>Supplied Product</b>	Antibody pair set content: 1. Antibody pair for IP: mouse monoclonal anti-BST2 (300 ug) 2. Antibody pair for WB: rabbit polyclonal anti-BST2 (50 ul)
<b>Storage Instruction</b>	Store reagents of the antibody pair set at -20°C or lower. Please aliquot to avoid repeated freeze thaw cycle. Reagents should be returned to -20°C storage immediately after use.

## Applications

- Immunoprecipitation-Western Blot

[Protocol Download](#)

## Gene Info — BST2

Entrez GeneID	<a href="#">684</a>
Gene Name	BST2
Gene Alias	CD317
Gene Description	bone marrow stromal cell antigen 2
Omim ID	<a href="#">600534</a>
Gene Ontology	<a href="#">Hyperlink</a>
Gene Summary	Bone marrow stromal cells are involved in the growth and development of B-cells. The specific function of the protein encoded by the bone marrow stromal cell antigen 2 is undetermined; however, this protein may play a role in pre-B-cell growth and in rheumatoid arthritis. [provided by RefSeq
Other Designations	tetherin

## Disease

- [Genetic Predisposition to Disease](#)
- [Ovarian Neoplasms](#)