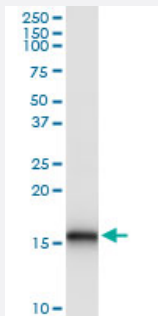


BST2 (Human) IP-WB Antibody Pair

Catalog # H00000684-PW2

Size 1 Set

Applications



Immunoprecipitation of BST2 transfected lysate using rabbit polyclonal anti-BST2 and Protein A Magnetic Bead ([U0007](#)), and immunoblotted with mouse purified polyclonal anti-BST2.

Specification

Product Description	This IP-WB antibody pair set comes with one antibody for immunoprecipitation and another to detect the precipitated protein in western blot.
Reactivity	Human
Quality Control Testing	Immunoprecipitation-Western Blot (IP-WB) Immunoprecipitation of BST2 transfected lysate using rabbit polyclonal anti-BST2 and Protein A Magnetic Bead (U0007), and immunoblotted with mouse purified polyclonal anti-BST2.
Supplied Product	Antibody pair set content: 1. Antibody pair for IP: rabbit polyclonal anti-BST2 (300 ul) 2. Antibody pair for WB: mouse purified polyclonal anti-BST2 (50 ug)
Storage Instruction	Store reagents of the antibody pair set at -20°C or lower. Please aliquot to avoid repeated freeze thaw cycle. Reagents should be returned to -20°C storage immediately after use.

Applications

- Immunoprecipitation-Western Blot

[Protocol Download](#)

Gene Info — BST2

Entrez GeneID	684
Gene Name	BST2
Gene Alias	CD317
Gene Description	bone marrow stromal cell antigen 2
Omim ID	600534
Gene Ontology	Hyperlink
Gene Summary	Bone marrow stromal cells are involved in the growth and development of B-cells. The specific function of the protein encoded by the bone marrow stromal cell antigen 2 is undetermined; however, this protein may play a role in pre-B-cell growth and in rheumatoid arthritis. [provided by RefSeq
Other Designations	tetherin

Disease

- [Genetic Predisposition to Disease](#)
- [Ovarian Neoplasms](#)