

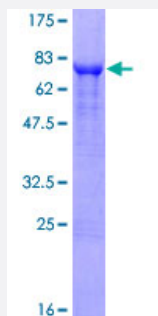
Full-Length

# CEACAM1 (Human) Recombinant Protein (P02)

Catalog # H00000634-P02

Size 10 ug, 25 ug

## Applications



## Specification

### Product Description

Human CEACAM1 full-length ORF ( NP\_001020083.1, 1 a.a. - 464 a.a.) recombinant protein with G ST-tag at N-terminal.

### Sequence

MGHLSAPLHRVRVPWQGLLLTASLLTFWNPPTTAQLTTESMPFNVAEGKEVLLL VHNLPQQLFY  
SWYKGERVDGNRQMGYAIGTQQATPGPANSGRETYPNASLLIQNVTONDTGFYTLQVIKSDLVNE  
EATGQFHVPELPKPSISSNNSNPVEDKDAVAFTCEPETQDDTYLWWINNQLSPVSPRLQLSNGN  
RTLTLSSVTRNDTGPECEIQNPVSANRSDPVTNLNVTYGPDTPTISPSTYYRPGANLSLSCYAASN  
PPAQYSWLINGTFQQSTQELFIPNITVNNSGSYCHANNSVTGCNRTTVKTIMTELSPVVAKPQIKA  
SKTTVTGDKDSVNLTCSTNDTGISIRWFFKNQSLPSSERMKLSQGNTLSINPVKREDAGTYWCE  
VFNPISKQSDPIMLVNYNALPQENGLSPGAIAGIVGVVALVALIAVALACFLHFGKTGSSGPLQ

### Host

Wheat Germ (in vitro)

### Theoretical MW (kDa)

76.9

### Interspecies Antigen Sequence

Mouse (54); Rat (55)

### Preparation Method

[in vitro wheat germ expression system](#)

### Purification

Glutathione Sepharose 4 Fast Flow

### Quality Control Testing

12.5% SDS-PAGE Stained with Coomassie Blue.

<b>Storage Buffer</b>	50 mM Tris-HCl, 10 mM reduced Glutathione, pH=8.0 in the elution buffer.
<b>Storage Instruction</b>	Store at -80°C. Aliquot to avoid repeated freezing and thawing.
<b>Note</b>	Best use within three months from the date of receipt of this protein.

## Applications

- Enzyme-linked Immunoabsorbent Assay
- Western Blot (Recombinant protein)
- Antibody Production
- Protein Array

## Gene Info — CEACAM1

<b>Entrez GeneID</b>	<a href="#">634</a>
<b>GeneBank Accession#</b>	<a href="#">NM_001024912.1</a>
<b>Protein Accession#</b>	<a href="#">NP_001020083.1</a>
<b>Gene Name</b>	CEACAM1
<b>Gene Alias</b>	BGP, BGP1, BGPI
<b>Gene Description</b>	carcinoembryonic antigen-related cell adhesion molecule 1 (biliary glycoprotein)
<b>Omim ID</b>	<a href="#">109770</a>
<b>Gene Ontology</b>	<a href="#">Hyperlink</a>

**Gene Summary**

This gene encodes a member of the carcinoembryonic antigen (CEA) gene family, which belongs to the immunoglobulin superfamily. Two subgroups of the CEA family, the CEA cell adhesion molecules and the pregnancy-specific glycoproteins, are located within a 1.2 Mb cluster on the long arm of chromosome 19. Eleven pseudogenes of the CEA cell adhesion molecule subgroup are also found in the cluster. The encoded protein was originally described in bile ducts of liver as biliary glycoprotein. Subsequently, it was found to be a cell-cell adhesion molecule detected on leukocytes, epithelia, and endothelia. The encoded protein mediates cell adhesion via homophilic as well as heterophilic binding to other proteins of the subgroup. Multiple cellular activities have been attributed to the encoded protein, including roles in the differentiation and arrangement of tissue three-dimensional structure, angiogenesis, apoptosis, tumor suppression, metastasis, and the modulation of innate and adaptive immune responses. Multiple transcript variants encoding different isoforms have been reported, but the full-length nature of only two has been determined. [provided by RefSeq]

**Other Designations**

CD66a antigen|antigen CD66|biliary glycoprotein adhesion molecule|carcinoembryonic antigen-related cell adhesion molecule 1

**Disease**

- [Body Weight](#)
- [Diabetes Mellitus](#)
- [Genetic Predisposition to Disease](#)
- [Meningococcal Infections](#)
- [Metabolic Syndrome X](#)
- [Osteoporosis](#)