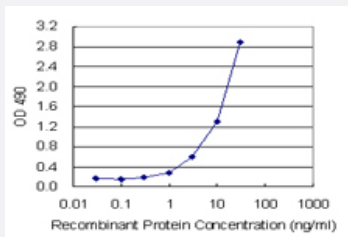


CEACAM1 (Human) Matched Antibody Pair

Catalog # H00000634-AP43

Size 1 Set

Applications



Sandwich ELISA detection sensitivity ranging from 0.3 ng/ml to 100 ng/ml.

Specification

Product Description	This antibody pair set comes with a matched antibody pair to detect and quantify the protein level of human CEACAM1.
Reactivity	Human
Interspecies Antigen Sequence	Mouse (53%); Rat (54%)
Quality Control Testing	Standard curve using recombinant protein (H00000634-P01) as an analyte. Sandwich ELISA detection sensitivity ranging from 0.3 ng/ml to 100 ng/ml.
Supplied Product	Antibody pair set content: 1. Capture antibody: mouse monoclonal anti-CEACAM1 (100 ug) 2. Detection antibody: biotinylated mouse monoclonal anti-CEACAM1, IgG1 Kappa (50 ug) *Reagents are sufficient for at least 3-5 x 96 well plates using recommended protocols.
Storage Instruction	Store reagents of the antibody pair set at -20°C or lower. Please aliquot to avoid repeated freeze thaw cycle. Reagents should be returned to -20°C storage immediately after use.

Applications

- ELISA Pair (Recombinant protein)

[Protocol Download](#)

Gene Info — CEACAM1

Entrez GeneID [634](#)

Gene Name CEACAM1

Gene Alias BGP, BGP1, BGPI

Gene Description carcinoembryonic antigen-related cell adhesion molecule 1 (biliary glycoprotein)

Omim ID [109770](#)

Gene Ontology [Hyperlink](#)

Gene Summary This gene encodes a member of the carcinoembryonic antigen (CEA) gene family, which belongs to the immunoglobulin superfamily. Two subgroups of the CEA family, the CEA cell adhesion molecules and the pregnancy-specific glycoproteins, are located within a 1.2 Mb cluster on the long arm of chromosome 19. Eleven pseudogenes of the CEA cell adhesion molecule subgroup are also found in the cluster. The encoded protein was originally described in bile ducts of liver as biliary glycoprotein. Subsequently, it was found to be a cell-cell adhesion molecule detected on leukocytes, epithelia, and endothelia. The encoded protein mediates cell adhesion via homophilic as well as heterophilic binding to other proteins of the subgroup. Multiple cellular activities have been attributed to the encoded protein, including roles in the differentiation and arrangement of tissue three-dimensional structure, angiogenesis, apoptosis, tumor suppression, metastasis, and the modulation of innate and adaptive immune responses. Multiple transcript variants encoding different isoforms have been reported, but the full-length nature of only two has been determined. [provided by RefSeq]

Other Designations CD66a antigen|antigen CD66|biliary glycoprotein adhesion molecule|carcinoembryonic antigen-related cell adhesion molecule 1

Disease

- [Body Weight](#)
- [Diabetes Mellitus](#)
- [Genetic Predisposition to Disease](#)
- [Meningococcal Infections](#)
- [Metabolic Syndrome X](#)

- [Osteoporosis](#)